

## What's New - May 2022

### Article

#### New AMD processors

The ThinkSystem SR645 server now supports the new AMD EPYC 7003 Series Processors with AMD 3D V-Cache ("Milan-X"). These are high-performance processors which have 768MB of L3 cache. These processors are best suited for Electronic Design Automation (EDA) and Computer-Aided Engineering (CAE) workloads.

These new processors can now be configured with the Lenovo ThinkSystem SR645.



Figure 1. Lenovo ThinkSystem SR645 now support "Milan-X" processors

For more information about the new Milan-X processors see the Lenovo Press article available at <https://lenovopress.com/lp1593-amd-epyc-7003-processors-with-3d-v-cache>

For SR645 configuration information, see the SR645 product guide: <https://lenovopress.lenovo.com/lp1280-thinksystem-sr645-server>

#### New server options

The following new server options have been announced:

- [Drives](#)
- [Storage controllers for internal drives](#)
- [Storage controller for external drives](#)
- [GPUs](#)

#### Drives

- [ThinkSystem U.2 P5520 Read Intensive NVMe PCIe 4.0 SSD drive family](#)
- [ThinkSystem U.2 P5620 Mixed Use NVMe PCIe 4.0 SSD drive family](#)
- [ThinkSystem U.3 7450 PRO Read Intensive NVMe PCIe 4.0 SSD drive family](#)
- [ThinkSystem U.3 7450 MAX Mixed Use NVMe PCIe 4.0 SSD drive family](#)
- [ThinkSystem U.3 PM1733a Read Intensive NVMe PCIe 4.0 SSD drive family](#)
- 20TB SAS and SATA hard disk drives

For more information see these resources:

- [ThinkSystem SSD Portfolio](#)
- [ThinkSystem HDD Reference](#)

### Storage controllers for internal drives

- [ThinkSystem RAID 9350-16i 4GB Flash PCIe 12Gb Internal Adapter](#)
- [ThinkSystem RAID 9350-8i 2GB Flash PCIe 12Gb Internal Adapter](#)

For more information, see this resource:

- [ThinkSystem RAID Adapter and HBA Reference](#)



Figure 2. ThinkSystem RAID 9350-16i 4GB Flash PCIe 12Gb Internal Adapter

### Storage controller for external drives

- [ThinkSystem RAID 940-8e 4GB Flash PCIe Gen4 12Gb Adapter](#)

### GPUs

- New feature codes for existing GPU models without the CEC secondary RoT chip:
  - ThinkSystem NVIDIA A10 24GB PCIe Gen4 Passive GPU w/o CEC
  - ThinkSystem NVIDIA A100 80GB PCIe Gen4 Passive GPU w/o CEC
  - ThinkSystem NVIDIA A30 24GB PCIe Gen4 Passive GPU w/o CEC
  - ThinkSystem NVIDIA A40 48GB PCIe Gen4 Passive GPU w/o CEC

For details see the following resource:

- [ThinkSystem and ThinkAgile GPU Summary](#)

### Extending support of existing options

The following exist server options now have additional server support:

- [Network adapters](#)
- [Drives](#)
- [Storage adapters](#)
- [GPUs](#)
- [ESXi Preload](#)

### Network adapters

- [ThinkSystem Intel X710-T4L 10GBase-T 4-Port PCIe Ethernet Adapter](#)
  - Added multiple systems
- Mellanox ConnectX-5 EDR IB VPI Dual-port x16 PCIe 3.0 HCA
  - Added SR630 V2 support
- ThinkSystem Mellanox ConnectX-4 Lx 10/25GbE SFP28 2-port PCIe Ethernet Adapter
  - Added SD630 V2 support

## Drives

- [ThinkSystem P5800X Write Intensive NVMe PCIe 4.0 SSDs](#)
  - Added SR850 V2 and SR860 V2 support
- Multi-Vendor Entry SSDs
  - Added SN550 V2, SR670 V2, SR850 V2 and SR860 V2 support

For more information see this resource:

- [ThinkSystem SSD Portfolio](#)



Figure 3. ThinkSystem P5800X Write Intensive NVMe PCIe 4.0 SSD

## Storage adapters

- X350 RAID adapters and HBAs - added ST650 V2, SR630 V2, SR650 V2, SR670 V2, SR850 V2 and SR860 V2 support
  - ThinkSystem 4350-16i SAS/SATA 12Gb HBA
  - ThinkSystem 4350-8i SAS/SATA 12Gb HBA
  - ThinkSystem RAID 5350-8i PCIe 12Gb Adapter
  - ThinkSystem RAID 9350-16i 4GB Flash PCIe 12Gb Adapter
  - ThinkSystem RAID 9350-8i 2GB Flash PCIe 12Gb Adapter
- ThinkSystem RAID 540-16i PCIe Gen4 12Gb Adapter
  - Added SR570, SR590, SR630, SR650 support
- ThinkSystem 4-Port PCIe Gen4 NVMe Retimer Adapter
  - Added SR645, SR850 V2, SR860 V2

For more information, see this resource:

- [ThinkSystem RAID Adapter and HBA Reference](#)

## GPUs

- ThinkSystem NVIDIA A100 80GB PCIe Gen4 Passive GPU
  - Added SR670, SR655, SR860 V2 support
- ThinkSystem AMD Instinct MI210 PCIe Gen4 Passive Accelerator
  - Added SR650 V2 support
- ThinkSystem NVIDIA A2 16GB PCIe Gen4 Passive GPU
  - Added multiple systems

For details see the following resource:

- [ThinkSystem and ThinkAgile GPU Summary](#)

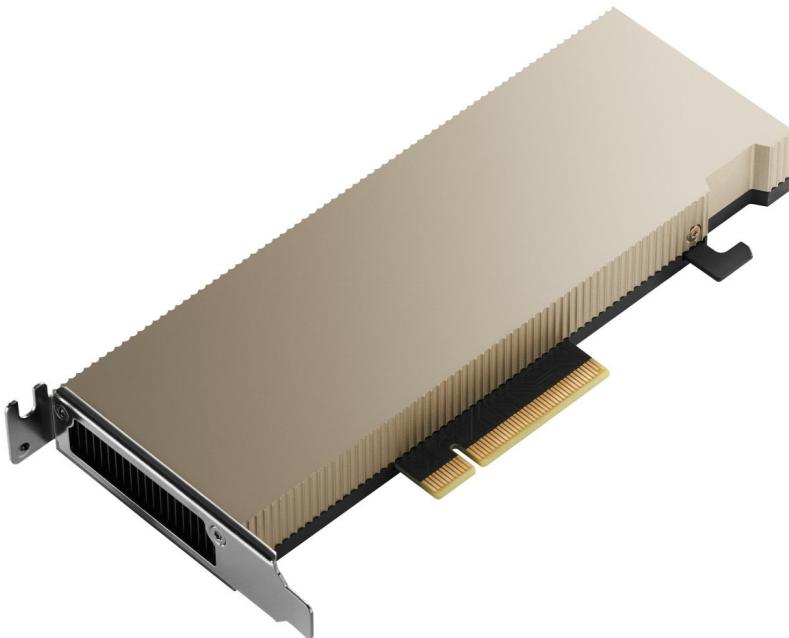


Figure 4. ThinkSystem NVIDIA A2 16GB PCIe Gen4 Passive GPU

## ESXi Preload

- VMware ESXi 7.0 U3 is now available as a factory preload in most ThinkSystem servers

## Notices

Lenovo may not offer the products, services, or features discussed in this document in all countries. Consult your local Lenovo representative for information on the products and services currently available in your area. Any reference to a Lenovo product, program, or service is not intended to state or imply that only that Lenovo product, program, or service may be used. Any functionally equivalent product, program, or service that does not infringe any Lenovo intellectual property right may be used instead. However, it is the user's responsibility to evaluate and verify the operation of any other product, program, or service. Lenovo may have patents or pending patent applications covering subject matter described in this document. The furnishing of this document does not give you any license to these patents. You can send license inquiries, in writing, to:

Lenovo (United States), Inc.  
8001 Development Drive  
Morrisville, NC 27560  
U.S.A.  
Attention: Lenovo Director of Licensing

LENOVO PROVIDES THIS PUBLICATION "AS IS" WITHOUT WARRANTY OF ANY KIND, EITHER EXPRESS OR IMPLIED, INCLUDING, BUT NOT LIMITED TO, THE IMPLIED WARRANTIES OF NON-INFRINGEMENT, MERCHANTABILITY OR FITNESS FOR A PARTICULAR PURPOSE. Some jurisdictions do not allow disclaimer of express or implied warranties in certain transactions, therefore, this statement may not apply to you.

This information could include technical inaccuracies or typographical errors. Changes are periodically made to the information herein; these changes will be incorporated in new editions of the publication. Lenovo may make improvements and/or changes in the product(s) and/or the program(s) described in this publication at any time without notice.

The products described in this document are not intended for use in implantation or other life support applications where malfunction may result in injury or death to persons. The information contained in this document does not affect or change Lenovo product specifications or warranties. Nothing in this document shall operate as an express or implied license or indemnity under the intellectual property rights of Lenovo or third parties. All information contained in this document was obtained in specific environments and is presented as an illustration. The result obtained in other operating environments may vary. Lenovo may use or distribute any of the information you supply in any way it believes appropriate without incurring any obligation to you.

Any references in this publication to non-Lenovo Web sites are provided for convenience only and do not in any manner serve as an endorsement of those Web sites. The materials at those Web sites are not part of the materials for this Lenovo product, and use of those Web sites is at your own risk. Any performance data contained herein was determined in a controlled environment. Therefore, the result obtained in other operating environments may vary significantly. Some measurements may have been made on development-level systems and there is no guarantee that these measurements will be the same on generally available systems. Furthermore, some measurements may have been estimated through extrapolation. Actual results may vary. Users of this document should verify the applicable data for their specific environment.

© Copyright Lenovo 2024. All rights reserved.

This document, LP1598, was created or updated on May 24, 2022.

Send us your comments in one of the following ways:

- Use the online Contact us review form found at:  
<https://lenovopress.lenovo.com/LP1598>
- Send your comments in an e-mail to:  
[comments@lenovopress.com](mailto:comments@lenovopress.com)

This document is available online at <https://lenovopress.lenovo.com/LP1598>.

## Trademarks

Lenovo and the Lenovo logo are trademarks or registered trademarks of Lenovo in the United States, other countries, or both. A current list of Lenovo trademarks is available on the Web at <https://www.lenovo.com/us/en/legal/copytrade/>.

The following terms are trademarks of Lenovo in the United States, other countries, or both:

Lenovo®

ThinkAgile®

ThinkSystem®

The following terms are trademarks of other companies:

AMD, AMD 3D V-Cache™, AMD EPYC™, and AMD Instinct™ are trademarks of Advanced Micro Devices, Inc.

Intel® is a trademark of Intel Corporation or its subsidiaries.

Other company, product, or service names may be trademarks or service marks of others.