

## Cisco Nexus 9300 Series Network Switches

### Product Guide

The Cisco Nexus 9300 Series Network Switches are designed to meet the evolving demands of modern data centers, providing high-density, nonblocking, and low-power-consuming solutions. These switches are ideal for top-of-rack (ToR), middle-of-row (MoR), and end-of-row (EoR) deployments in enterprise data centers, service provider facilities, and large virtualized and cloud computing environments. The Nexus 9300 Series supports both Layer 2 and Layer 3 switching, offering up to 2.56 terabits per second (Tbps) of internal bandwidth. This series includes various models, each tailored to different connectivity needs.

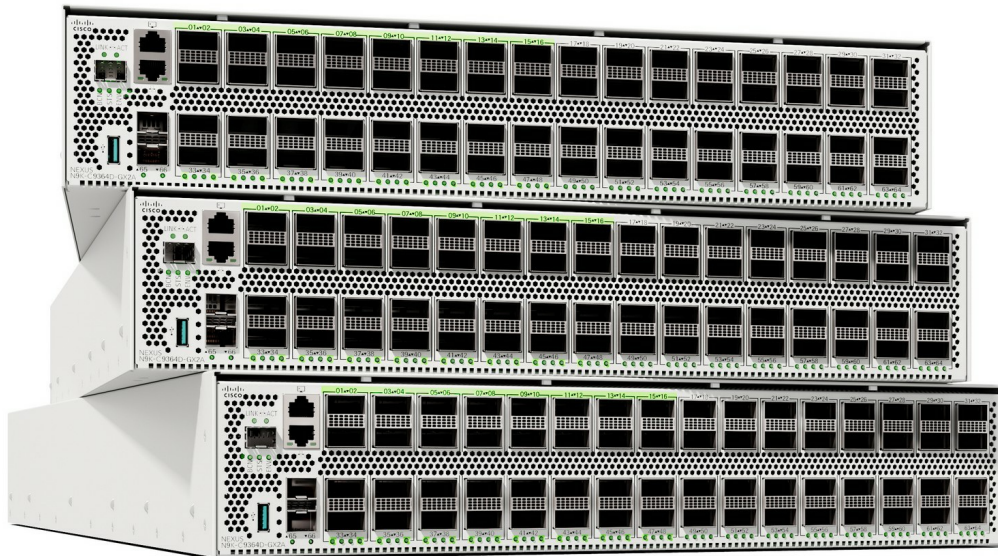


Figure 1. Cisco Nexus 9300 Series Ethernet switches

Built on Cisco's CloudScale technology, the Nexus 9300 Series ensures robust performance and scalability, making it suitable for high-performance computing, artificial intelligence, and machine learning applications. These switches provide advanced features like wire-rate security, telemetry, and automation capabilities, which are essential for managing complex IT infrastructures. Additionally, the Nexus 9300 Series integrates seamlessly with Cisco's Nexus Dashboard for enhanced visibility and control, enabling efficient network management and troubleshooting. This combination of high performance, flexibility, and advanced features makes the Cisco Nexus 9300 Series a powerful choice for modern data center networks.

Lenovo is an official Cisco Solution Technology Integrator (STI) for Cisco Nexus 9300 Switches, licenses, and Cisco Smart Net Services, integrated with our Lenovo ISG Servers and Storage solutions.

Benefits to customers include the following:

- Single Vendor Simplicity: Purchase of all integrated infrastructure on a single invoice
- Optimized for Interoperability: Server/Storage/Switches integrated at factory for ease of deployment
- Lower TCO: Turnkey infrastructure solution from a single vendor lowering overall solution cost

## Why Lenovo and Cisco Together?

Cisco offerings:

- State-of-the-Art technologies across Network, Security, Collaboration, and Observability
- Highest reliable switches, world class performance and service, high performance service organizations, add statement on services
  - WW technology leadership in networking, collaboration, and security with #1 market share across most domains.
  - Build a future-ready network with the industry leader in networking.
  - Highly reliable switches with world-class performance.
  - Comprehensive global services.
- World-class partner program to enable partner centric selling
- Industry leading partner program to support core partner success

Lenovo offerings:

- Highest Performance and Most Reliable Lenovo ThinkSystem servers:
  - #1 Top 500 Supercomputers for 6 consecutive years and #1 current world record performance workloads.
  - #1 x86 server reliability for 10 consecutive years and #1 x86 security for 5 consecutive years
  - #4 Gartner Top Tech Supply chain
  - Comprehensive global services
- Matured solution and services delivery with strong performance
- Global delivery with footprint across 180 markets

## Lenovo & Cisco Global Strategic Partnership

The availability of Cisco Nexus 9300 switches is part of a larger global strategic partnership between the two companies. The partnership enables co-engineered and integrated offerings into Lenovo's industry-leading hybrid AI infrastructure, turnkey services, and as-a-Service portfolio for deployments from pocket to cloud.

- **Enhanced Networking Ecosystem**

Integration of the Cisco Nexus networking ecosystem into Lenovo's edge-to-cloud portfolio delivering turnkey industry-leading network performance, security, and scalability.

- Enhanced Networking Ecosystem
- Accelerate Time-to-Innovation
- Single Pane of Glass Management.
- Single Vendor Simplicity

- **Customer Valued Innovation**

Lenovo and Cisco co-develop and integrate new IP and enhanced offerings into Lenovo Digital Workplace Solutions, enabling a seamless, secure and efficient user experience.

- Digital Workplace Solutions Productivity Boost
- Enhanced Generative AI
- Expanded Professional Services

- **Integrated Turnkey Solutions**

The Lenovo and Cisco strategic partnership delivers fully engineered and integrated infrastructure solutions and services enabling customers to quickly deploy turnkey solutions into production to enable better and faster business outcomes.

- Accelerate Digital Transformation
- Optimized for Interoperability
- Expanded Channel Partner Network & Purchase Experience

## Model summary

The following table lists the ordering models and base feature codes for the network switches.

Table 1. Models

Model	CTO Model	Base feature code	Description	Form factor	Ports	Uplinks
10 Gb Ethernet with 100 Gb Uplinks						
<a href="#">9348GC-FX3</a>	7DL1CTO1WW	C5P9	Cisco Nexus 9300-FX3 Series Switch (N9K-C9348GC-FX3)	1U	48x 100M/1GT	4x 1/10/25G + 2x 40/100G
<a href="#">9348GC-FX3PH</a>	7DL2CTO1WW	C5PH	Cisco Nexus 9300-FX3 Series Switch (N9K-C9348GC-FX3PH)	1U	40x 100M/1GT + 8x 100M (PoE)	4x 1/10/25G + 2x 40/100G
<a href="#">93108TC-FX3</a>	7DL8CTO1WW	C5PB	Cisco Nexus 9300-FX3 Series Switch (N9K-C93108TC-FX3)	1U	48x 1/10GT	6x 40/100G
<a href="#">93108TC-FX3P</a>	7DL9CTO1WW	C5PA	Cisco Nexus 9300-FX3 Series Switch (N9K-C93108TC-FX3P)	1U	48x 1/10GT (all PoE)	6x 40/100G
<a href="#">93216TC-FX2</a>	7DLACTO1WW	C5NZ	Cisco Nexus 9300-FX2 Series Switch (N9K-C93216TC-FX2)	2U	96x 1/10G	12x 40/100G
25 Gb Ethernet with 100 Gb Uplinks						
<a href="#">93180YC-FX3</a>	7DL4CTO1WW	C5PF	Cisco Nexus 9300-FX3 Series Switch (N9K-C93180YC-FX3)	1U	48x 10/25G	6p 40/100G
<a href="#">93240YC-FX2</a>	7DL5CTO1WW	C5PE	Cisco Nexus 9300-FX2 Series Switch (N9K-C93240YC-FX2)	1.2U	48x 10/25G	12x 40/100G
<a href="#">93360YC-FX2</a>	7DL6CTO1WW	C5PD	Cisco Nexus 9300-FX2 Series Switch (N9K-C93360YC-FX2)	2U	96x 10/25G	12x 40/100G
50 Gb Ethernet with 100 Gb Uplinks						
<a href="#">93400LD-H1</a>	7DL7CTO1WW	C5PC	Cisco Nexus 93400LD-H1 Series Switch (N9K-C93400LD-H1)	1U	48x 50G	4x 400G
100 Gb Ethernet						
<a href="#">93600CD-GX</a>	7DLJCTO1WW	C5P1	Cisco Nexus 9300-GX Series Switch (N9K-C93600CD-GX)	1U	28x 40/100G	8x 400G
<a href="#">9336C-FX2</a>	7DLBCTO1WW	C5P8	Cisco Nexus 9300-FX2 Series Switch (N9K-C9336C-FX2)	1U	36x 100G	-
<a href="#">9336C-FX2-E</a>	7DLCCTO1WW	C5P7	Cisco Nexus 9300-FX2 Series Switch (N9K-C9336C-FX2-E)	1U	36x 100G	-
<a href="#">9364C-GX</a>	7DLDCTO1WW	C5P6	Cisco Nexus 9300-GX Series Switch (N9K-C9364C-GX)	2U	64x 100G	-
400 Gb Ethernet						
<a href="#">9316D-GX</a>	7DLECTO1WW	C5P5	Cisco Nexus 9300-GX Series Switch (N9K-C9316D-GX)	1U	16x 400G	-

Model	CTO Model	Base feature code	Description	Form factor	Ports	Uplinks
<a href="#">9332D-GX2B</a>	7DLFCTO1WW	C5P4	Cisco Nexus 9300-GX2 Series Switch (N9K-C9332D-GX2B)	1U	32x 400G (8 with encryption) + 2x 10Gb	-
<a href="#">9332D-H2R</a>	7DLGCTO1WW	C5P3	Cisco Nexus 9300-H2R Series Switch (N9K-C9332D-H2R)	1U	32x 400G	-
<a href="#">9348D-GX2A</a>	7DLHCTO1WW	C5P2	Cisco Nexus 9300-GX2 Series Switch (N9K-C9348D-GX2A)	2U	48x 400G	-
<a href="#">9364D-GX2A</a>	7DLKCTO1WW	C5P0	Cisco Nexus 9300-GX2 Series Switch (N9K-C9364D-GX2A)	2U	64x 400G (16 with encryption)	-

## Market availability

Cisco switches are offered by Lenovo in the following markets:

- United States
- Germany
- India
- Brazil
- UAE

Additional markets are planned.

## SAP HANA solutions

For SAP HANA offerings, the following table lists the Cisco switches that can be incorporated into the solution.

Table 2. SAP HANA solutions

Model	CTO Model	Base feature code	Description	Form factor	Ports	Uplinks
10 Gb Ethernet with 100 Gb Uplinks						
<a href="#">9348GC-FX3</a>	7DL1CTO1WW	C5P9	Cisco Nexus 9300-FX3 Series Switch (N9K-C9348GC-FX3)	1U	48x 100M/1GT	4x 1/10/25G + 2x 40/100G
25 Gb Ethernet with 100 Gb Uplinks						
<a href="#">93180YC-FX3</a>	7DL4CTO1WW	C5PF	Cisco Nexus 9300-FX3 Series Switch (N9K-C93180YC-FX3)	1U	48x 10/25G	6p 40/100G

## Overviews of the Cisco Nexus 9300 Series

Models in this section:

- 10Gb switches
  - [9348GC-FX3](#)
  - [9348GC-FX3PH](#)
  - [93108TC-FX3](#)
  - [93108TC-FX3P](#)
  - [93216TC-FX2](#)
- 25Gb switches
  - [93180YC-FX3](#)
  - [93240YC-FX2](#)
  - [93360YC-FX2](#)
- 50Gb switch
  - [93400LD-H1](#)
- 100Gb switches
  - [93600CD-GX](#)
  - [9336C-FX2](#)
  - [9336C-FX2-E](#)
  - [9364C-GX](#)
- 400Gb switches
  - [9316D-GX](#)
  - [9332D-GX2B](#)
  - [9332D-H2R](#)
  - [9348D-GX2A](#)
  - [9364D-GX2A](#)

## 9348GC-FX3

The Cisco Nexus 9348GC-FX3 is a high-performance network switch designed to meet the needs of modern data centers. It offers 48 ports of 1/10GBASE-T and 4 ports of 40/100 Gigabit Ethernet, providing versatile connectivity options for various network configurations. Leveraging Cisco's CloudScale technology, the 9348GC-FX3 ensures exceptional performance and scalability, making it ideal for demanding applications such as high-performance computing, artificial intelligence, and machine learning. This switch also includes advanced features like comprehensive security, telemetry, and automation capabilities, which are crucial for efficient network management and troubleshooting. With its robust design and advanced functionalities, the Cisco Nexus 9348GC-FX3 is a powerful solution for enhancing data center infrastructure.

- Front Ports:
  - 48 x 1/10GBASE-T ports
  - 4 x 40/100 Gigabit Ethernet QSFP28 ports
- Rear Ports:
  - 2 x 40/100 Gigabit Ethernet QSFP28 ports

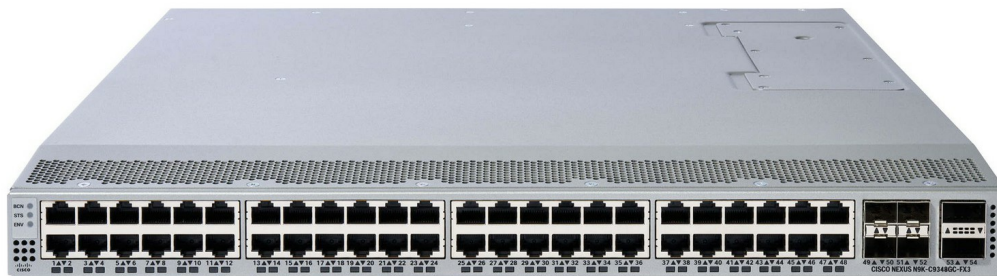


Figure 2. Cisco Nexus 9348GC-FX3

For more information on this switch, see the following Cisco resources:

- [9348GC-FX3 product web page](#)
- [9300-FX3 Series datasheet](#)

## 9348GC-FX3PH

The Cisco Nexus 9348GC-FX3PH is a high-performance, fixed-port switch designed for modern data center environments. It features 40 1GBASE-T downlink ports, which can be configured to operate at 10 Mbps, 100 Mbps, or 1 Gbps, eight 100M downlink ports with support Power-over-Ethernet (PoE, PoE+, PoE++), four 10/25G SFP28 uplink ports, and two 40/100G QSFP28 uplink ports. The eight PoE ports are designed to provide power and data connectivity to devices such as IP phones, wireless access points, and other PoE-enabled devices, making the ports highly versatile for various network configurations.

This switch leverages Cisco's CloudScale technology to deliver exceptional performance and scalability, supporting up to 696 Gbps of bandwidth and over 517 million packets per second (Mpps). The 9348GC-FX3PH also includes advanced features such as comprehensive security, telemetry, and automation capabilities, which are essential for efficient network management and troubleshooting.

The 9348GC-FX3PH has the following ports:

- Front Ports:
  - 40 x 1GBASE-T downlink ports (10/100/1000 Mbps)
  - 8 x 10/100M downlink ports with support for Power-over-Ethernet (PoE, PoE+, PoE++)
  - 4 x 10/25G SFP28 uplink ports
  - 2 x 40/100G QSFP28 uplink ports
- Rear Ports:
  - 2 x 40/100G QSFP28 uplink ports

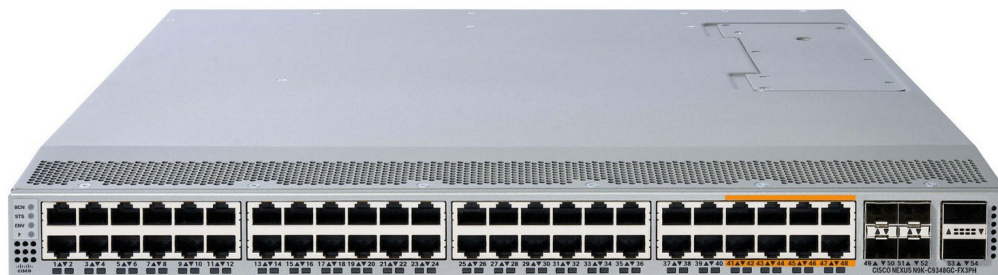


Figure 3. Cisco Nexus 9348GC-FX3PH

For more information on this switch, see the following Cisco resources:

- [9300-FX3 Series datasheet](#)

### 93108TC-FX3

The Cisco Nexus 93108TC-FX3 is a high-performance, fixed-port switch designed for modern data centers. It features 48 ports of 100M/1/2.5/5/10GBASE-T, providing flexible connectivity options for various network configurations. Additionally, it includes 6 uplink ports that support 40/100 Gigabit Ethernet QSFP28, ensuring high-speed data transfer and scalability. Built on Cisco's CloudScale technology, the 93108TC-FX3 delivers exceptional performance with a bandwidth capacity of 2.16 Tbps and the ability to handle up to 1.2 billion packets per second (Bpps). This switch also supports advanced features such as comprehensive security, telemetry, and automation capabilities, which are essential for efficient network management and troubleshooting.

The 93108TC-FX3 has the following ports:

- Front Ports:
  - 48 x 100M/1/2.5/5/10GBASE-T ports
  - 6 x 40/100 Gigabit Ethernet QSFP28 ports
- Rear Ports:
  - 2 management ports (one 10/100/1000BASE-T port and one SFP port)
  - 1 console port (RS-232)
  - 1 USB port

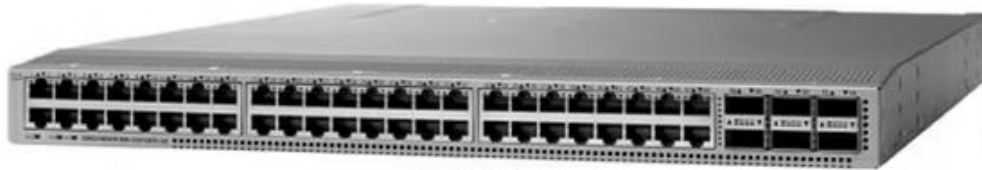


Figure 4. Cisco Nexus 93108TC-FX3

For more information on this switch, see the following Cisco resources:

- [9300-FX3 Series datasheet](#)



## 93108TC-FX3P

The Cisco Nexus 93108TC-FX3P is a high-performance, fixed-port switch designed for modern data centers. It features 48 ports of 100M/1/2.5/5/10GBASE-T, providing flexible connectivity options for various network configurations. Additionally, it includes 6 uplink ports that support 40/100 Gigabit Ethernet QSFP28, ensuring high-speed data transfer and scalability. Built on Cisco's CloudScale technology, the 93108TC-FX3P delivers exceptional performance with a bandwidth capacity of 2.16 Tbps and the ability to handle up to 1.2 billion packets per second (Bpps). This switch also supports advanced features such as comprehensive security, telemetry, and automation capabilities, which are essential for efficient network management and troubleshooting.

The 93108TC-FX3P has the following ports:

- Front Ports:
  - 48 x 100M/1/2.5/5/10GBASE-T ports (all ports are Power-over-Ethernet capable (PoE, PoE+, PoE++))
  - 6 x 40/100 Gigabit Ethernet QSFP28 ports
- Rear Ports
  - 2 management ports (one 10/100/1000BASE-T port and one SFP port)
  - 1 console port (RS-232)
  - 1 USB port



Figure 5. Cisco Nexus 93108TC-FX3P

For more information on this switch, see the following Cisco resources:

- [9300-FX3 Series datasheet](#)

## 93216TC-FX2

The Cisco Nexus 93216TC-FX2 is a high-performance, fixed-port switch designed for modern data centers. It features 96 ports of 100M/1G/10GBASE-T, providing flexible connectivity options for various network configurations. Additionally, it includes 12 uplink ports that support 40/100 Gigabit Ethernet QSFP28, ensuring high-speed data transfer and scalability. Built on Cisco's CloudScale technology, the 93216TC-FX2 delivers exceptional performance with a bandwidth capacity of 4.32 Tbps and the ability to handle over 2.5 billion packets per second (Bpps). This switch also supports advanced features such as comprehensive security, telemetry, and automation capabilities, which are essential for efficient network management and troubleshooting.

The 93216TC-FX2 has the following ports:

- Front Ports:
  - 96 x 100M/1G/10G RJ45 ports
  - 12 x 40/100 Gigabit Ethernet QSFP28 ports
- Rear Ports
  - 2 management ports (one RJ-45 port and one SFP port)
  - 1 console port (RS-232)
  - 1 USB port



Figure 6. Cisco Nexus 93216TC-FX2

For more information on this switch, see the following Cisco resources:

- [9300-FX2 Series Datasheet](#)

## 93180YC-FX3

The Cisco Nexus 93180YC-FX3 is a high-performance, fixed-port switch designed for modern data centers. It features 48 downlink ports that support 1, 10, or 25 Gigabit Ethernet, providing flexible connectivity options for various network configurations. Additionally, it includes 6 uplink ports that support 40/100 Gigabit Ethernet QSFP28, ensuring high-speed data transfer and scalability. The switch also offers 1PPS (Pulse Per Second) and 10MHz SMB ports, along with the GPS/GNSS antenna connector, which are used for precise time synchronization and GPS connectivity,

Built on Cisco's CloudScale technology, the 93180YC-FX3 delivers exceptional performance with a bandwidth capacity of 3.6 Tbps and the ability to handle up to 1.2 billion packets per second (Bpps). This switch also supports advanced features such as comprehensive security, telemetry, and automation capabilities, which are essential for efficient network management and troubleshooting.

The 93180YC-FX3 has the following ports:

- Front Ports:
  - 48 x 100M/1/10/25-Gigabit Ethernet SFP28 ports
  - 6 x 10/25/40/50/100-Gigabit QSFP28 ports
  - 1PPS (Pulse Per Second) SMB port, 10MHz SMB port
  - GPS/GNSS antenna connector
- Rear Ports:
  - 1 management port (10/100/1000BASE-T)
  - 1 console port (RS-232)
  - 1 USB port

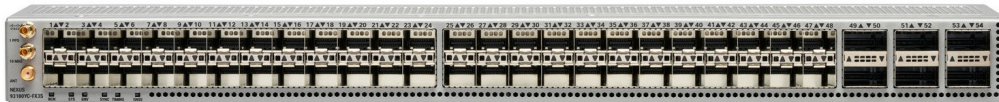


Figure 7. Cisco Nexus 93180YC-FX3

For more information on this switch, see the following Cisco resources:

- [Cisco Nexus 9300-FX3 Series datasheet](#)

## 93240YC-FX2

The Cisco Nexus 93240YC-FX2 is a high-performance, fixed-port switch designed for modern data centers. It features 48 downlink ports that support 1/10/25-Gbps speeds and 12 uplink ports configurable for 40/100-Gbps, providing a total bandwidth of 4.8 Tbps. This switch is built on Cisco's Cloud Scale technology, ensuring non-oversubscribed performance in a compact 1.2RU form factor. It supports both NX-OS and ACI modes, offering flexibility for traditional and automated, policy-based network environments. With advanced telemetry, real-time buffer utilization, and extensive programmability, the Nexus 93240YC-FX2 is ideal for scalable, secure, and efficient data center operations.

The 93240YC-FX2 has the following ports:

- Front ports:
  - 48 x 1/10/25-Gigabit Ethernet SFP28 ports
  - 12 x 40/100-Gigabit Ethernet QSFP28 ports
  - 2 x Management port (SFP+ and RJ-45)
  - 1 x Console port (RS232)
  - 1 x USB port
- Rear ports:
  - None



Figure 8. Cisco Nexus 93240YC-FX2

For more information on this switch, see the following Cisco resources:

- [Cisco Nexus 9300-FX2 Series datasheet](#)

## 93360YC-FX2

The Cisco Nexus 93360YC-FX2 is a robust, fixed-port switch designed for high-performance data center environments. It features 96 downlink ports that support 1/10/25-Gbps speeds and 12 uplink ports configurable for 40/100-Gbps, delivering a total bandwidth of 7.2 Tbps. This 2RU switch leverages Cisco's Cloud Scale technology to provide non-oversubscribed performance, ensuring efficient and scalable network operations. It supports both NX-OS and ACI modes, offering flexibility for traditional and automated, policy-driven network deployments. With advanced telemetry, extensive programmability, and real-time buffer utilization, the Nexus 93360YC-FX2 is ideal for modern, dynamic data centers requiring high throughput and low latency.

The 93360YC-FX2 has the following ports:

- Front ports:
  - 96 x 1/10/25-Gigabit Ethernet SFP28 ports
  - 12 x 40/100-Gigabit Ethernet QSFP28 ports
- Rear ports
  - 2 x Management port (SFP and RJ-45)
  - 1 x Console port (RS232)
  - 1 x USB port

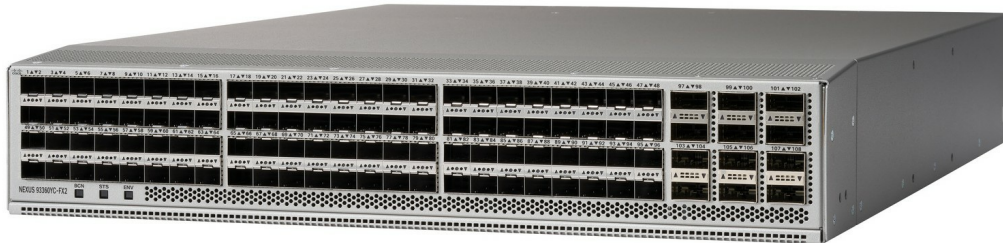


Figure 9. Cisco Nexus 93360YC-FX2

For more information on this switch, see the following Cisco resources:

- [Cisco Nexus 9300-FX2 Series datasheet](#)

## 93400LD-H1

The Cisco Nexus 93400LD-H1 is a high-performance, fixed-port switch designed for modern data centers. It features 48 ports that support 50-Gbps speeds and 4 uplink ports configurable for 400-Gbps, providing a total bandwidth of 8 Tbps. This 1RU switch leverages Cisco's Cloud Scale technology to deliver non-oversubscribed performance, ensuring efficient and scalable network operations. It supports both NX-OS and ACI modes, offering flexibility for traditional and automated, policy-driven network deployments. With advanced telemetry, extensive programmability, and real-time buffer utilization, the Nexus 93400LD-H1 is ideal for AI/ML applications and other demanding data center environments.

The 93400LD-H1 has the following ports:

- Front ports:
  - 48 x 50-Gigabit Ethernet SFP56 ports
  - 4 x 400-Gigabit Ethernet QSFP-DD ports
- Rear Ports:
  - 2 x Management ports (SFP and RJ-45)
  - 1 x Console port (RS232)
  - 1 x USB port

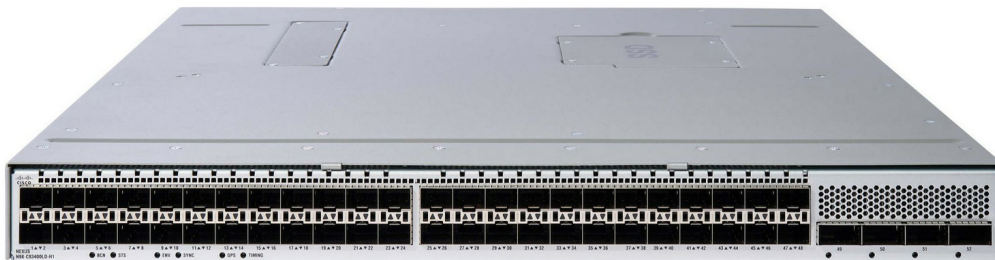


Figure 10. Cisco Nexus 93400LD-H1

For more information on this switch, see the following Cisco resources:

- [Cisco Nexus 93400LD-H1 datasheet](#)

## 93600CD-GX

The Cisco Nexus 93600CD-GX is a high-performance, fixed-port switch designed for modern data centers. It features 28 ports that support 100-Gbps speeds and 8 uplink ports configurable for 400-Gbps, providing a total bandwidth of 12 Tbps. This 1RU switch leverages Cisco's Cloud Scale technology to deliver non-oversubscribed performance, ensuring efficient and scalable network operations. It supports both NX-OS and ACI modes, offering flexibility for traditional and automated, policy-driven network deployments. With advanced telemetry, extensive programmability, and real-time buffer utilization, the Nexus 93600CD-GX is ideal for AI/ML applications and other demanding data center environments.

The 93600CD-GX has the following ports:

- Front ports:
  - 28 x 10/40/100-Gigabit Ethernet QSFP28 ports
  - 8 x 10/40/100/400-Gigabit Ethernet QSFP-DD ports
- Rear ports:
  - 2 x Management ports (SFP and RJ-45)
  - 1 x Console port (RS232)
  - 1 x USB port



Figure 11. Cisco Nexus 93600CD-GX

For more information on this switch, see the following Cisco resources:

- [Cisco Nexus 9300-GX Series datasheet](#)

## 9336C-FX2

The Cisco Nexus 9336C-FX2 is a high-performance, fixed-port switch designed for modern data centers. It features 36 ports that support 40/100-Gbps speeds, providing a total bandwidth of 7.2 Tbps. This 1RU switch leverages Cisco's Cloud Scale technology to deliver non-oversubscribed performance, ensuring efficient and scalable network operations. It supports both NX-OS and ACI modes, offering flexibility for traditional and automated, policy-driven network deployments. With advanced telemetry, extensive programmability, and real-time buffer utilization, the Nexus 9336C-FX2 is ideal for high-throughput, low-latency applications in dynamic data center environments.

The main difference between the Cisco Nexus 9336C-FX2 and [9336C-FX2-E](#) is that the 9336C-FX2-E can be configured to support 1/10/25/40/50/100-Gbps Ethernet or 16-, 32-Gbps Fibre Channel ports, offering more versatile connectivity options.

The 9336C-FX2 has the following ports:

- Front ports:
  - 36 x 40/100-Gigabit Ethernet QSFP28 ports
- Rear ports:
  - 2 x Management ports (SFP and RJ-45)
  - 1 x Console port (RS232)
  - 1 x USB port



Figure 12. Cisco Nexus 9336C-FX2

For more information on this switch, see the following Cisco resources:

- [Cisco Nexus 9300-FX2 Series datasheet](#)



## 9336C-FX2-E

The Cisco Nexus 9336C-FX2-E is a high-performance, fixed-port switch designed for modern data centers. It features 36 ports that support 40/100-Gbps speeds, providing a total bandwidth of 7.2 Tbps. This 1RU switch leverages Cisco's Cloud Scale technology to deliver non-oversubscribed performance, ensuring efficient and scalable network operations. It supports both NX-OS and ACI modes, offering flexibility for traditional and automated, policy-driven network deployments. Additionally, the switch can be configured to work as 1/10/25/40/50/100-Gbps or as 16-, 32-Gbps Fibre Channel ports, providing versatile connectivity options. With advanced telemetry, extensive programmability, and real-time buffer utilization, the Nexus 9336C-FX2-E is ideal for high-throughput, low-latency applications in dynamic data center environments.

The main difference between the Cisco Nexus 9336C-FX2-E and [9336C-FX2](#) is that the 9336C-FX2-E can be configured to support 1/10/25/40/50/100-Gbps Ethernet or 16-, 32-Gbps Fibre Channel ports, offering more versatile connectivity options.

The 9336C-FX2-E has the following ports:

- Front ports:
  - 36 x 40/100-Gigabit Ethernet QSFP28 ports
- Rear ports:
  - 2 x Management ports (SFP and RJ-45)
  - 1 x Console port (RS232)
  - 1 x USB port



Figure 13. Cisco Nexus 9336C-FX2-E

For more information on this switch, see the following Cisco resources:

- [Cisco Nexus 9300-FX2 Series datasheet](#)

## 9364C-GX

The Cisco Nexus 9364C-GX is a high-performance, fixed-port switch designed for modern data centers. It features 64 ports that support 40/100-Gbps speeds, providing a total bandwidth of 12.8 Tbps. This 2RU switch leverages Cisco's Cloud Scale technology to deliver non-oversubscribed performance, ensuring efficient and scalable network operations. It supports both NX-OS and ACI modes, offering flexibility for traditional and automated, policy-driven network deployments. With advanced telemetry, extensive programmability, and real-time buffer utilization, the Nexus 9364C-GX is ideal for high-throughput, low-latency applications in dynamic data center environments.

The 9364C-GX has the following ports:

- Front ports:
  - 64 x 40/100-Gigabit Ethernet QSFP28 ports
- Rear ports:
  - 2 x Management ports (SFP and RJ-45)
  - 1 x Console port (RS232)
  - 1 x USB port

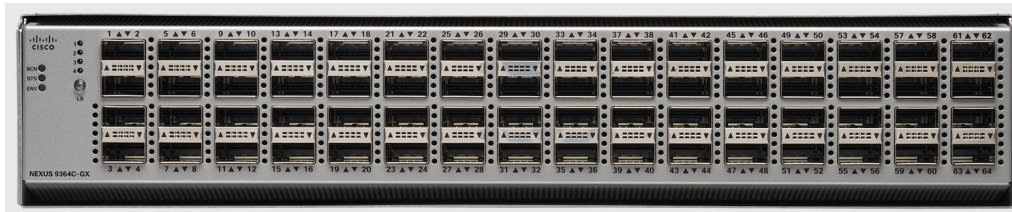


Figure 14. Cisco Nexus 9364C-GX

For more information on this switch, see the following Cisco resources:

- [Cisco Nexus 9300-GX Series datasheet](#)

## 9316D-GX

The Cisco Nexus 9316D-GX is a high-performance, fixed-port switch designed for modern data centers. It features 16 ports that support 400-Gbps speeds, providing a total bandwidth of 12.8 Tbps. This 1RU switch leverages Cisco's Cloud Scale technology to deliver non-oversubscribed performance, ensuring efficient and scalable network operations. It supports both NX-OS and ACI modes, offering flexibility for traditional and automated, policy-driven network deployments. With advanced telemetry, extensive programmability, and real-time buffer utilization, the Nexus 9316D-GX is ideal for high-throughput, low-latency applications in dynamic data center environments.

The 9316D-GX has the following ports:

- Front ports:
  - 16 x 400-Gigabit Ethernet QSFP-DD ports
- Rear ports:
  - 2 x Management ports (SFP and RJ-45)
  - 1 x Console port (RS232)
  - 1 x USB port



Figure 15. Cisco Nexus 9316D-GX

For more information on this switch, see the following Cisco resources:

- [Cisco Nexus 9300-GX Series datasheet](#)

## 9332D-GX2B

The Cisco Nexus 9332D-GX2B is a high-performance, fixed-port switch designed for modern data centers. It features 32 ports that support 400-Gbps speeds, providing a total bandwidth of 12.8 Tbps. The rightmost eight ports on the switch, marked with green labels, are capable of wire-rate MACsec and Cloudsec encryption. This feature enhances the security of data transmissions by providing encryption at the hardware level.

This 1RU switch leverages Cisco's Cloud Scale technology to deliver non-oversubscribed performance, ensuring efficient and scalable network operations. It supports both NX-OS and ACI modes, offering flexibility for traditional and automated, policy-driven network deployments. With advanced telemetry, extensive programmability, and real-time buffer utilization, the Nexus 9332D-GX2B is ideal for high-throughput, low-latency applications in dynamic data center environments.

The 9332D-GX2B has the following ports:

- Front Ports:
  - 32 x 400-Gigabit Ethernet QSFP-DD ports (8 ports with MACsec and Cloudsec encryption)
  - 2 x 10-Gigabit Ethernet SFP+ ports
- Rear Ports:
  - 2 x Management ports (SFP and RJ-45)
  - 1 x Console port (RS232)
  - 1 x USB port



Figure 16. Cisco Nexus 9332D-GX2B

For more information on this switch, see the following Cisco resources:

- [Cisco Nexus 9300-GX2 Series datasheet](#)

## 9332D-H2R

The Cisco Nexus 9332D-H2R is a high-performance, fixed-port switch designed for modern data centers. It features 32 ports that support 400-Gbps speeds, providing a total bandwidth of 25.6 Tbps. This 1RU switch leverages Cisco's Cloud Scale technology to deliver non-oversubscribed performance, ensuring efficient and scalable network operations. It includes 80MB of on-die packet buffer and 8GB of high bandwidth memory (HBM), with MACsec capability on all 32 ports. The switch also offers 1PPS (Pulse Per Second) and 10MHz SMB ports, which are used for precise time synchronization.

The switch supports both NX-OS and ACI modes, offering flexibility for traditional and automated, policy-driven network deployments. With advanced telemetry, extensive programmability, and real-time buffer utilization, the Nexus 9332D-H2R is ideal for high-throughput, low-latency applications in dynamic data center environments.

The 9332D-H2R has the following ports:

- Front Ports:
  - 32 x 400-Gigabit Ethernet QSFP-DD ports
  - 2 x 10-Gigabit Ethernet SFP+ ports
  - 1x PPS (Pulse Per Second) SMB port
  - 1x 10MHz SMB port
  - 3 x Management ports (1x SFP and 2x RJ-45)
- Rear Ports:
  - 1 x Console port (RS232)
  - 1 x USB port



Figure 17. Cisco Nexus 9332D-H2R

For more information on this switch, see the following Cisco resources:

- [9332D-H2R datasheet](#)

## 9348D-GX2A

The Cisco Nexus 9348D-GX2A is a high-performance, fixed-port switch designed for modern data centers. It features 48 ports that support 400-Gbps speeds and 2 uplink ports configurable for 10-Gbps, providing a total bandwidth of 38.4 Tbps. This 2RU switch leverages Cisco's Cloud Scale technology to deliver non-oversubscribed performance, ensuring efficient and scalable network operations. It supports both NX-OS and ACI modes, offering flexibility for traditional and automated, policy-driven network deployments. With advanced telemetry, extensive programmability, and real-time buffer utilization, the Nexus 9348D-GX2A is ideal for high-throughput, low-latency applications in dynamic data center environments.

The 9348D-GX2A has the following ports:

- Front ports:
  - 48 x 400-Gigabit Ethernet QSFP-DD ports
  - 2 x 10-Gigabit Ethernet SFP+ ports
  - 3 x Management ports (1x SFP and 2x RJ-45)
  - 1 x USB port



Figure 18. Cisco Nexus 9348D-GX2A

For more information on this switch, see the following Cisco resources:

- [9348D-GX2A product web page](#)
- [9300-GX2 Series datasheet](#)

## 9364D-GX2A

The Cisco Nexus 9364D-GX2A is a high-performance, fixed-port switch designed for modern data centers. It features 64 ports that support 400-Gbps speeds, providing a total bandwidth of 51.2 Tbps. This 2RU switch leverages Cisco's Cloud Scale technology to deliver non-oversubscribed performance, ensuring efficient and scalable network operations. It supports both NX-OS and ACI modes, offering flexibility for traditional and automated, policy-driven network deployments. The first 16 ports, marked in green, are capable of wire-rate MACsec encryption. This feature enhances the security of data transmissions by providing encryption at the hardware level.

The 9364D-GX2A has the following ports:

- Front ports:
  - 64 x 400-Gigabit Ethernet QSFP-DD ports (16 ports with MACsec encryption)
  - 2 x 10-Gigabit Ethernet SFP+ ports
  - 1 x Management port (SFP)
  - 1 x Management port (RJ-45)
  - 1 x Console port (RS-232)
  - 1 x USB port



Figure 19. Cisco Nexus 9364D-GX2A

For more information on this switch, see the following Cisco resources:

- [9364D-GX2A product web page](#)
- [9300-GX2 Series datasheet](#)



## Software packages

Cisco software packages can be included in the order

Table 3. Software packages

Part number	Feature code	Description
CTO only	C783	Essentials
CTO only	C784	Advantage
CTO only	C785	Premier

The software license term matches the Support Duration selected (3 years or 5 years) as described in the [Warranty and Services](#) section.

The key features of the software packages are as follows:

- Essentials software package (feature C783)
  - Fabric management features (DCNM/NDFC LAN and PTP)
  - Fabric services features (iCAM, ITD, IP fabric for media non-blocking multicast, and smart channel)
  - Routing and switching features (BGP, EIGRP, GRE, IS-IS, MSDP, OSPF, PBR, PIM, SSM, VRF3, VXLAN BGP EVPN, Micro-segmentation (using VXLAN Group Policy Option), SRv6 (no EVPN), and SR-MPLS (no EVPN))
  - Telemetry features (NetFlow, FT, FTE, SSX)
- Advantage software package (feature C784)
  - included with Essentials plus the following:
  - Tenant Routed Multicast
  - DCI overlay features (Inter AS option B, segment routing SR-MPLS, Layer 3 EVPN over segment routing SRv6, MPLS Layer 3 VPN, and VXLAN EVPN Multi-Site)
  - Fabric services features (Enhanced PBR (EPBR))
  - RTP Flow Monitoring (Media Flow Analytics), PTP Monitoring, Multicast NAT
- Premier (feature C785)
  - All features included in Essentials and Advantage packages.
  - Unlock all the features and functions in [Cisco Nexus Dashboard Insights](#)

The Cisco licenses that these software packages correspond to are listed in the following table.



Table 4. Equivalent Cisco software license part numbers

<b>Switch model</b>	<b>9348GC-FX3</b> <b>9348GC-FX3PH</b>	<b>93180YC-FX3</b> <b>93240YC-FX2</b> <b>93360YC-FX2</b> <b>93400LD-H1</b> <b>93108TC-FX3</b> <b>93108TC-FX3P</b> <b>93216TC-FX2</b> <b>9336C-FX2</b> <b>9336C-FX2-E</b>	<b>9364C-GX</b> <b>9316D-GX</b> <b>9332D-GX2B</b> <b>9332D-H2R</b> <b>9348D-GX2A</b> <b>93600CD-GX</b> <b>9364D-GX2A</b>
<b>Essential</b>			
3 Years (36 months)	C1E1TN9300GF-3Y	C1E1TN9300XF-3Y	C1E1TN9300XF2-3Y
5 Years (60 months)	C1E1TN9300GF-5Y	C1E1TN9300XF-5Y	C1E1TN9300XF2-5Y
<b>Advantage</b>			
3 Years (36 months)	C1A1TN9300GF-3Y	C1A1TN9300XF-3Y	C1A1TN9300XF2-3Y
5 Years (60 months)	C1A1TN9300GF-5Y	C1A1TN9300XF-5Y	C1A1TN9300XF2-5Y
<b>Premier</b>			
3 Years (36 months)	C1P1TN9300GF-3Y	C1P1TN9300XF-3Y	C1P1TN9300XF2-3Y
5 Years (60 months)	C1P1TN9300GF-5Y	C1P1TN9300XF-5Y	C1P1TN9300XF2-5Y

### Switch mode selection

The Cisco Nexus 9300 Series Network Switches offer three distinct modes to cater to various network requirements: MODE-ACI-LEAF, MODE-ACI-SPINE, and MODE-NXOS.

- MODE-ACI-LEAF and MODE-ACI-SPINE are integral to Cisco’s Application Centric Infrastructure (ACI), which provides a policy-based automation solution for data centers. In this setup, leaf switches connect directly to endpoints like servers, while spine switches form the backbone of the network, ensuring high-speed connectivity and scalability.
- MODE-NXOS operates in standalone mode using Cisco’s NX-OS software, offering a traditional, feature-rich network operating system for environments that do not require the advanced automation and policy management capabilities of ACI.

You can specify the switch mode using the feature codes listed in the following table.

Table 5. Switch mode

Part number	Feature code	Description	10Gb			25Gb	50	100Gb			400Gb								
			9348GC-FX3	9348GC-FX3PH	93108TC-FX3	93108TC-FX3P	93216TC-FX2	93180YC-FX3	93240YC-FX2	93360YC-FX2	93400LD-H1	93600CD-GX	9336C-FX2	9336C-FX2-E	9364C-GX	9316D-GX	9332D-GX2B	9332D-H2R	9348D-GX2A
CTO only	C6FJ	Mode selection between ACI and NXOS (MODE-ACI-LEAF)	Y	N	Y	Y	Y	Y	Y	N	Y	Y	Y	Y	Y	Y	N	Y	Y
CTO only	C6KN	Mode selection between ACI and NXOS (MODE-ACI-SPINE)	N	N	N	N	N	N	N	N	Y	N	N	Y	Y	Y	N	Y	Y
CTO only	C6FK	Mode selection between ACI and NXOS (MODE-NXOS)	Y	Y	Y	Y	Y	Y	Y	Y	Y	Y	Y	Y	Y	Y	Y	Y	Y

## Transceivers and cables

Transceivers and cables are grouped as follows:

- [Transceivers](#)
- [SFP/QSFP optical cables](#)
- [SFP/QSFP copper cables](#)
- [RJ45 cables](#)

**Support for Lenovo transceivers & cables:** The Cisco Nexus 9300 switches sold by Lenovo will recognize and work with the Lenovo transceivers and cables listed below. Cisco will support configurations that use these components.

### Transceivers

Table 6. Transceivers

Part number	Feature code	Description	10Gb					25Gb			50				100Gb				400Gb			
			9348GC-FX3	9348GC-FX3PH	93108TC-FX3	93108TC-FX3P	93216TC-FX2	93180YC-FX3	93240YC-FX2	93360YC-FX2	93400LD-H1	93600CD-GX	9336C-FX2	9336C-FX2-E	9364C-GX	9316D-GX	9332D-GX2B	9332D-H2R	9348D-GX2A	9364D-GX2A		
<b>1Gb Transceivers</b>																						
00FE333	A5DL	SFP 1000Base-T (RJ-45) Transceiver	1	1	1	1	1	N	1	1	1	1	1	1	1	1	1	1	1	1		
<b>10Gb Transceivers</b>																						
49Y4216	0069	Brocade 10Gb SFP+ SR Optical Transceiver	4	4	N	N	N	48	48	96	48	N	N	N	N	N	2	N	2	2		
49Y4218	0064	QLogic 10Gb SFP+ SR Optical Transceiver	4	4	N	N	N	48	48	96	48	N	N	N	N	N	2	N	2	2		
46C3447	5053	SFP+ SR Transceiver	4	4	N	N	N	48	48	96	48	N	N	N	N	N	2	N	2	2		
4TC7A78615	BNDR	ThinkSystem Accelink 10G SR SFP+ Ethernet transceiver	4	4	N	N	N	48	48	96	48	N	N	N	N	N	2	N	2	2		
<b>25Gb Transceivers</b>																						
7G17A03537	AV1B	Lenovo Dual Rate 10G/25G SR SFP28 Transceiver	4	4	N	N	N	48	48	96	48	N	N	N	N	N	N	N	N	N		
<b>40Gb Transceivers</b>																						
4TC7A85336	BU8E	ThinkSystem Accelink 40G SR4 QSFP+ Ethernet transceiver	2	2	6	6	12	6	12	12	4	36	36	36	64	16	32	32	48	64		

Part number	Feature code	Description	10Gb					25Gb			50	100Gb				400Gb				
			9348GC-FX3	9348GC-FX3PH	93108TC-FX3	93108TC-FX3P	93216TC-FX2	93180YC-FX3	93240YC-FX2	93360YC-FX2	93400LD-H1	93600CD-GX	9336C-FX2	9336C-FX2-E	9364C-GX	9316D-GX	9332D-GX2B	9332D-H2R	9348D-GX2A	9364D-GX2A
<b>100Gb Transceivers</b>																				
4M27A67042	BFH1	Lenovo 100Gb SR4 QSFP28 Ethernet Transceiver	2	2	6	6	12	6	12	12	4	36	36	36	64	16	32	32	48	64
7G17A03539	AV1D	Lenovo 100GBase-SR4 QSFP28 Transceiver	2	2	6	6	12	6	12	12	4	36	36	36	64	16	32	32	48	64
4TC7A86257	BVA4	Lenovo 100GBase-SR4 QSFP28 Transceiver	2	2	6	6	12	6	12	12	4	36	36	36	64	16	32	32	48	64
<b>200/400Gb Transceivers</b>																				
4TC7A81831	BQJZ	ThinkSystem NDR/NDR200 QSFP112 IB Multi Mode Solo-Transceiver	N	N	N	N	N	N	N	N	4	8	N	N	N	16	32	32	48	64

## SFP/QSFP optical cables

Table 7. SFP/QSFP optical cables

Part number	Feature code	Description	10Gb					25Gb			50	100Gb				400Gb				
			9348GC-FX3	9348GC-FX3PH	93108TC-FX3	93108TC-FX3P	93216TC-FX2	93180YC-FX3	93240YC-FX2	93360YC-FX2	93400LD-H1	93600CD-GX	9336C-FX2	9336C-FX2-E	9364C-GX	9316D-GX	9332D-GX2B	9332D-H2R	9348D-GX2A	9364D-GX2A
<b>LC-LC OM3 Fiber Optic Cables (these cables require a 10 GbE SFP+ SR or 25 GbE SFP28 SR transceiver)</b>																				
00MN499	ASR5	Lenovo 0.5m LC-LC OM3 MMF Cable	4	4	N	N	N	48	48	96	48	N	N	N	N	N	2	N	2	2
00MN502	ASR6	Lenovo 1m LC-LC OM3 MMF Cable	4	4	N	N	N	48	48	96	48	N	N	N	N	N	2	N	2	2
00MN505	ASR7	Lenovo 3m LC-LC OM3 MMF Cable	4	4	N	N	N	48	48	96	48	N	N	N	N	N	2	N	2	2
00MN508	ASR8	Lenovo 5m LC-LC OM3 MMF Cable	4	4	N	N	N	48	48	96	48	N	N	N	N	N	2	N	2	2

Part number	Feature code	Description	10Gb					25Gb			50	100Gb				400Gb				
			9348GC-FX3	9348GC-FX3PH	93108TC-FX3	93108TC-FX3P	93216TC-FX2	93180YC-FX3	93240YC-FX2	93360YC-FX2	93400LD-H1	93600CD-GX	9336C-FX2	9336C-FX2-E	9364C-GX	9316D-GX	9332D-GX2B	9332D-H2R	9348D-GX2A	9364D-GX2A
00MN511	ASR9	Lenovo 10m LC-LC OM3 MMF Cable	4	4	N	N	N	48	48	96	48	N	N	N	N	N	2	N	2	2
00MN514	ASRA	Lenovo 15m LC-LC OM3 MMF Cable	4	4	N	N	N	48	48	96	48	N	N	N	N	N	2	N	2	2
00MN517	ASRB	Lenovo 25m LC-LC OM3 MMF Cable	4	4	N	N	N	48	48	96	48	N	N	N	N	N	2	N	2	2
00MN520	ASRC	Lenovo 30m LC-LC OM3 MMF Cable	4	4	N	N	N	48	48	96	48	N	N	N	N	N	2	N	2	2
<b>QSFP OM3 Optical Cables (these cables require a transceiver)</b>																				
00VX003	AT2U	Lenovo 10m QSFP+ MPO-MPO OM3 MMF Cable	2	2	6	6	12	6	12	12	4	36	36	36	64	16	32	32	48	64
<b>100G MPO OM4 MMF Cables (these cables require a transceiver)</b>																				
7Z57A03567	AV25	Lenovo 5m MPO-MPO OM4 MMF Cable	2	2	6	6	12	6	12	12	4	36	36	36	64	16	32	32	48	64
7Z57A03568	AV26	Lenovo 7m MPO-MPO OM4 MMF Cable	2	2	6	6	12	6	12	12	4	36	36	36	64	16	32	32	48	64
7Z57A03569	AV27	Lenovo 10m MPO-MPO OM4 MMF Cable	2	2	6	6	12	6	12	12	4	36	36	36	64	16	32	32	48	64
7Z57A03570	AV28	Lenovo 15m MPO-MPO OM4 MMF Cable	2	2	6	6	12	6	12	12	4	36	36	36	64	16	32	32	48	64
7Z57A03571	AV29	Lenovo 20m MPO-MPO OM4 MMF Cable	2	2	6	6	12	6	12	12	4	36	36	36	64	16	32	32	48	64
7Z57A03572	AV2A	Lenovo 30m MPO-MPO OM4 MMF Cable	2	2	6	6	12	6	12	12	4	36	36	36	64	16	32	32	48	64
<b>OM4 LC to LC Cables (these cables require a transceiver)</b>																				
4Z57A10845	B2P9	Lenovo 0.5m LC-LC OM4 MMF Cable	4	4	N	N	N	48	48	96	48	N	N	N	N	N	2	N	2	2
4Z57A10846	B2PA	Lenovo 1m LC-LC OM4 MMF Cable	4	4	N	N	N	48	48	96	48	N	N	N	N	N	2	N	2	2

Part number	Feature code	Description	10Gb					25Gb			50	100Gb				400Gb				
			9348GC-FX3	9348GC-FX3PH	93108TC-FX3	93108TC-FX3P	93216TC-FX2	93180YC-FX3	93240YC-FX2	93360YC-FX2	93400LD-H1	93600CD-GX	9336C-FX2	9336C-FX2-E	9364C-GX	9316D-GX	9332D-GX2B	9332D-H2R	9348D-GX2A	9364D-GX2A
4Z57A10847	B2PB	Lenovo 3m LC-LC OM4 MMF Cable	4	4	N	N	N	48	48	96	48	N	N	N	N	N	2	N	2	2
4Z57A10848	B2PC	Lenovo 5m LC-LC OM4 MMF Cable	4	4	N	N	N	48	48	96	48	N	N	N	N	N	2	N	2	2
4Z57A10849	B2PD	Lenovo 10m LC-LC OM4 MMF Cable	4	4	N	N	N	48	48	96	48	N	N	N	N	N	2	N	2	2
4Z57A10850	B2PE	Lenovo 15m LC-LC OM4 MMF Cable	4	4	N	N	N	48	48	96	48	N	N	N	N	N	2	N	2	2
4Z57A10851	B2PF	Lenovo 25m LC-LC OM4 MMF Cable	4	4	N	N	N	48	48	96	48	N	N	N	N	N	2	N	2	2
4Z57A10852	B2PG	Lenovo 30m LC-LC OM4 MMF Cable	4	4	N	N	N	48	48	96	48	N	N	N	N	N	2	N	2	2
<b>NVIDIA NDR Multi Mode Fibre Optical Cables</b>																				
4X97A81748	BQJN	Lenovo 3m NVIDIA NDR Multi Mode Optical Cable	N	N	N	N	N	N	N	N	4	8	N	N	N	16	32	32	48	64
4X97A81749	BQJP	Lenovo 5m NVIDIA NDR Multi Mode Optical Cable	N	N	N	N	N	N	N	N	4	8	N	N	N	16	32	32	48	64
4X97A81750	BQJQ	Lenovo 7m NVIDIA NDR Multi Mode MPO12 APC Optical Cable	N	N	N	N	N	N	N	N	4	8	N	N	N	16	32	32	48	64
4X97A81751	BQJR	Lenovo 10m NVIDIA NDR Multi Mode Optical Cable	N	N	N	N	N	N	N	N	4	8	N	N	N	16	32	32	48	64
4X97A81752	BQJS	Lenovo 20m NVIDIA NDR Multi Mode Optical Cable	N	N	N	N	N	N	N	N	4	8	N	N	N	16	32	32	48	64
4X97A85349	BSN6	Lenovo 30m NVIDIA NDR Multi Mode MPO12 APC Optical Cable	N	N	N	N	N	N	N	N	4	8	N	N	N	16	32	32	48	64

## SFP/QSFP copper cables

Table 8. SFP/QSFP copper cables

Part number	Feature code	Description	10Gb					25Gb			50	100Gb					400Gb				
			9348GC-FX3	9348GC-FX3PH	93108TC-FX3	93108TC-FX3P	93216TC-FX2	93180YC-FX3	93240YC-FX2	93360YC-FX2	93400LD-H1	93600CD-GX	9336C-FX2	9336C-FX2-E	9364C-GX	9316D-GX	9332D-GX2B	9332D-H2R	9348D-GX2A	9364D-GX2A	
<b>SFP+ 10Gb Active DAC Cables</b>																					
00VX111	AT2R	Lenovo 1m Active DAC SFP+ Cables	4	4	N	N	N	48	48	96	48	N	N	N	N	N	2	N	2	2	
00VX114	AT2S	Lenovo 3m Active DAC SFP+ Cables	4	4	N	N	N	48	48	96	48	N	N	N	N	N	2	N	2	2	
00VX117	AT2T	Lenovo 5m Active DAC SFP+ Cables	4	4	N	N	N	48	48	96	48	N	N	N	N	N	2	N	2	2	
<b>SFP28 25Gb Passive DAC Cables</b>																					
7Z57A03557	AV1W	Lenovo 1m Passive 25G SFP28 DAC Cable	4	4	N	N	N	48	48	96	48	N	N	N	N	N	N	N	N	N	
7Z57A03558	AV1X	Lenovo 3m Passive 25G SFP28 DAC Cable	4	4	N	N	N	48	48	96	48	N	N	N	N	N	N	N	N	N	
7Z57A03559	AV1Y	Lenovo 5m Passive 25G SFP28 DAC Cable	4	4	N	N	N	48	48	96	48	N	N	N	N	N	N	N	N	N	
<b>QSFP28 100Gb Ethernet Passive DAC Cables</b>																					
7Z57A03561	AV1Z	Lenovo 1m Passive 100G QSFP28 DAC Cable	2	2	6	6	12	6	12	12	4	36	36	36	64	16	32	32	48	64	
7Z57A03562	AV20	Lenovo 3m Passive 100G QSFP28 DAC Cable	2	2	6	6	12	6	12	12	4	36	36	36	64	16	32	32	48	64	
7Z57A03563	AV21	Lenovo 5m Passive 100G QSFP28 DAC Cable	2	2	6	6	12	6	12	12	4	36	36	36	64	16	32	32	48	64	
<b>QSFP28 100G-to-4x25G Ethernet Breakout Cables</b>																					
7Z57A03564	AV22	Lenovo 1m 100G QSFP28 to 4x25G SFP28 Breakout DAC Cable	4	4	N	N	N	48	48	96	48	N	N	N	N	N	N	N	N	N	N

Part number	Feature code	Description	10Gb					25Gb			50	100Gb				400Gb				
			9348GC-FX3	9348GC-FX3PH	93108TC-FX3	93108TC-FX3P	93216TC-FX2	93180YC-FX3	93240YC-FX2	93360YC-FX2	93400LD-H1	93600CD-GX	9336C-FX2	9336C-FX2-E	9364C-GX	9316D-GX	9332D-GX2B	9332D-H2R	9348D-GX2A	9364D-GX2A
4Z57A85043	BS32	Lenovo 1.5m 100G to 4x25G Breakout SFP28 Breakout DAC Cable	4	4	N	N	N	48	48	96	48	N	N	N	N	N	N	N	N	
4Z57A85044	BS33	Lenovo 2m 100G to 4x25G Breakout SFP28 Breakout DAC Cable	4	4	N	N	N	48	48	96	48	N	N	N	N	N	N	N	N	
7Z57A03565	AV23	Lenovo 3m 100G QSFP28 to 4x25G SFP28 Breakout DAC Cable	4	4	N	N	N	48	48	96	48	N	N	N	N	N	N	N	N	
7Z57A03566	AV24	Lenovo 5m 100G QSFP28 to 4x25G SFP28 Breakout DAC Cable	4	4	N	N	N	48	48	96	48	N	N	N	N	N	N	N	N	
<b>QSFP56 HDR InfiniBand Passive DAC Cables</b>																				
4Z57A14182	B4QQ	0.5m Mellanox HDR IB Passive Copper QSFP56 Cable	N	N	N	N	N	N	N	N	4	8	N	N	N	16	32	32	48	64
4Z57A14183	B4QR	1m Mellanox HDR IB Passive Copper QSFP56 Cable	N	N	N	N	N	N	N	N	4	8	N	N	N	16	32	32	48	64
4Z57A14184	B4QS	1.5m Mellanox HDR IB Passive Copper QSFP56 Cable	N	N	N	N	N	N	N	N	4	8	N	N	N	16	32	32	48	64
4Z57A14185	B4QT	2m Mellanox HDR IB Passive Copper QSFP56 Cable	N	N	N	N	N	N	N	N	4	8	N	N	N	16	32	32	48	64

## RJ45 cables

Table 9. RJ45 cables

Part number	Feature code	Description	10Gb					25Gb		50	100Gb				400Gb				
			9348GC-FX3	9348GC-FX3PH	93108TC-FX3	93108TC-FX3P	93216TC-FX2	93180YC-FX3	93240YC-FX2	93360YC-FX2	93400LD-H1	93600CD-GX	9336C-FX2	9336C-FX2-E	9364C-GX	9316D-GX	9332D-GX2B	9332D-H2R	9348D-GX2A
<b>CAT6 Green Cables</b>																			
00WE123	AVFW	0.75m Green Cat6 Cable	50	50	50	50	98	1	2	2	2	2	2	2	2	2	2	2	2
00WE127	AVFX	1.0m Green Cat6 Cable	50	50	50	50	98	1	2	2	2	2	2	2	2	2	2	2	2
00WE131	AVFY	1.25m Green Cat6 Cable	50	50	50	50	98	1	2	2	2	2	2	2	2	2	2	2	2
00WE135	AVFZ	1.5m Green Cat6 Cable	50	50	50	50	98	1	2	2	2	2	2	2	2	2	2	2	2
00WE139	AVG0	3m Green Cat6 Cable	50	50	50	50	98	1	2	2	2	2	2	2	2	2	2	2	2
90Y3718	A1MT	10m Green Cat6 Cable	50	50	50	50	98	1	2	2	2	2	2	2	2	2	2	2	2
90Y3727	A1MW	25m Green Cat6 Cable	50	50	50	50	98	1	2	2	2	2	2	2	2	2	2	2	2
<b>CAT6 Blue Cables</b>																			
90Y3721	A1MU	10m Blue Cat6 Cable	50	50	50	50	98	1	2	2	2	2	2	2	2	2	2	2	2
90Y3730	A1MX	25m Blue Cat6 Cable	50	50	50	50	98	1	2	2	2	2	2	2	2	2	2	2	2
<b>CAT6 Yellow Cables</b>																			
90Y3715	A1MS	10m Yellow Cat6 Cable	50	50	50	50	98	1	2	2	2	2	2	2	2	2	2	2	2
90Y3724	A1MV	25m Yellow Cat6 Cable	50	50	50	50	98	1	2	2	2	2	2	2	2	2	2	2	2
<b>CAT6 Cables</b>																			
4X97A83984	BRWD	Lenovo 3000mm Cat6 RJ45 White Cable without Jacket	49	49	49	49	97	1	1	1	1	1	1	1	1	1	1	1	1
<b>CAT5e Blue Cables</b>																			
40K5679	3801	0.6m Blue Cat5e Cable	50	50	50	50	98	1	2	2	2	2	2	2	2	2	2	2	2
00WE111	AVFT	0.75m Blue Cat5e Cable	50	50	50	50	98	1	2	2	2	2	2	2	2	2	2	2	2
00WE115	AVFU	1.0m Blue Cat5e Cable	50	50	50	50	98	1	2	2	2	2	2	2	2	2	2	2	2
00WE119	AVFV	1.25m Blue Cat5e Cable	50	50	50	50	98	1	2	2	2	2	2	2	2	2	2	2	2
40K8785	3802	1.5m Blue Cat5e Cable	50	50	50	50	98	1	2	2	2	2	2	2	2	2	2	2	2
40K5581	3803	3m Blue Cat5e Cable	50	50	50	50	98	1	2	2	2	2	2	2	2	2	2	2	2
40K8927	3804	10m Blue Cat5e Cable	50	50	50	50	98	1	2	2	2	2	2	2	2	2	2	2	2
40K8930	3805	25m Blue Cat5e Cable	50	50	50	50	98	1	2	2	2	2	2	2	2	2	2	2	2
<b>CAT5e Green Cables</b>																			
40K5563	3796	0.6m Green Cat5e Cable	50	50	50	50	98	1	2	2	2	2	2	2	2	2	2	2	2
00WE099	AVFQ	0.75m Green Cat5e Cable	50	50	50	50	98	1	2	2	2	2	2	2	2	2	2	2	2
00WE103	AVFR	1.0m Green Cat5e Cable	50	50	50	50	98	1	2	2	2	2	2	2	2	2	2	2	2
00WE107	AVFS	1.25m Green Cat5e Cable	50	50	50	50	98	1	2	2	2	2	2	2	2	2	2	2	2
40K5643	3797	1.5m Green Cat5e Cable	50	50	50	50	98	1	2	2	2	2	2	2	2	2	2	2	2
40K5793	3798	e1350 3 Meter Green Ethernet Cable	50	50	50	50	98	1	2	2	2	2	2	2	2	2	2	2	2



Part number	Feature code	Description	10Gb					25Gb	50	100Gb				400Gb						
			9348GC-FX3	9348GC-FX3PH	93108TC-FX3	93108TC-FX3P	93216TC-FX2	93180YC-FX3	93240YC-FX2	93360YC-FX2	93400LD-H1	93600CD-GX	9336C-FX2	9336C-FX2-E	9364C-GX	9316D-GX	9332D-GX2B	9332D-H2R	9348D-GX2A	9364D-GX2A
40K5794	3799	10m Green Cat5e Cable	50	50	50	50	98	1	2	2	2	2	2	2	2	2	2	2	2	2
40K8869	3800	25m Green Cat5e Cable	50	50	50	50	98	1	2	2	2	2	2	2	2	2	2	2	2	2
<b>CAT5e Yellow Cables</b>																				
40K8933	3791	e1350 .6 Meter Yellow Ethernet Cable	50	50	50	50	98	1	2	2	2	2	2	2	2	2	2	2	2	2
40K8951	3792	1.5m Yellow Cat5e Cable	50	50	50	50	98	1	2	2	2	2	2	2	2	2	2	2	2	2
40K8957	3793	3m Yellow Cat5e Cable	50	50	50	50	98	1	2	2	2	2	2	2	2	2	2	2	2	2
40K8801	3794	10m Yellow Cat5e Cable	50	50	50	50	98	1	2	2	2	2	2	2	2	2	2	2	2	2
40K8807	3795	25m Yellow Cat5e Cable	50	50	50	50	98	1	2	2	2	2	2	2	2	2	2	2	2	2

## Power supplies

For power supply configuration in DCSC, you will specify the airflow direction, either port-side exhaust (PSE) or port-side intake (oPSE).

Table 10. Air flow direction

Feature code	Description
C6FL	Dummy PID for Airflow Selection Port-side Intake (NXK-AF-PI)
C6FM	Dummy PID for Airflow Selection Port-side Exhaust (NXK-AF-PE)

The Cisco Nexus 9300 Series support the power supplies listed in the following table. Each switch supports two hot-swap redundant power supplies.

Table 11. Power supplies

Part number	Feature code	Description	10Gb					25Gb	50	100Gb				400Gb						
			9348GC-FX3	9348GC-FX3PH	93108TC-FX3	93108TC-FX3P	93216TC-FX2	93180YC-FX3	93240YC-FX2	93360YC-FX2	93400LD-H1	93600CD-GX	9336C-FX2	9336C-FX2-E	9364C-GX	9316D-GX	9332D-GX2B	9332D-H2R	9348D-GX2A	9364D-GX2A
CTO only	C6FW	Nexus AC 350W PSU - Port Side Exhaust w platinum efficiency (NXA-PAC-350W-PE2)	2	N	N	N	N	N	N	N	N	N	N	N	N	N	N	N	N	N
CTO only	C6FV	Nexus AC 350W PSU - Port Side Intake w platinum efficiency (NXA-PAC-350W-PI2)	2	N	N	N	N	N	N	N	N	N	N	N	N	N	N	N	N	N
CTO only	C6FU	Nexus NEBs AC 350W PSU - Port Side Exhaust (NXA-PAC-350W-PE)	2	N	N	N	N	N	N	N	N	N	N	N	N	N	N	N	N	N

Part number	Feature code	Description	10Gb				25Gb			50	100Gb			400Gb						
			9348GC-FX3	9348GC-FX3PH	93108TC-FX3	93108TC-FX3P	93216TC-FX2	93180YC-FX3	93240YC-FX2	93360YC-FX2	93400LD-H1	93600CD-GX	9336C-FX2	9336C-FX2-E	9364C-GX	9316D-GX	9332D-GX2B	9332D-H2R	9348D-GX2A	9364D-GX2A
CTO only	C6HP	Nexus NEBs AC 350W PSU - Port Side Intake (NXA-PAC-350W-PI)	2	N	N	N	N	N	N	N	N	N	N	N	N	N	N	N	N	N
CTO only	C6GT	PID to Select 350W PSU PE (N9K-SELECT-350W-PE)	N	2	N	N	N	N	N	N	N	N	N	N	N	N	N	N	N	N
CTO only	C6GS	PID to Select 350W PSU PI (N9K-SELECT-350W-PI)	N	2	N	N	N	N	N	N	N	N	N	N	N	N	N	N	N	N
CTO only	C6GR	PID to Select 1900W PSU PE (N9K-SELCT-1900W-PE)	N	2	N	N	N	N	N	N	N	N	N	N	N	N	N	N	N	N
CTO only	C6GQ	PID to Select 1900W PSU PI (N9K-SELCT-1900W-PI)	N	2	N	N	N	N	N	N	N	N	N	N	N	N	N	N	N	N
CTO only	C6K0	Nexus NEBs AC 500W PSU - Port Side Exhaust (NXA-PAC-500W-PE)	N	N	2	N	N	N	N	N	N	N	N	N	N	N	N	N	N	N
CTO only	C6K1	Nexus NEBs AC 500W PSU - Port Side Intake (NXA-PAC-500W-PI)	N	N	2	N	N	N	N	N	N	N	N	N	N	N	N	N	N	N
CTO only	C6K3	Nexus PoE AC 1100W PSU - Port Side Exhaust (NXA-PAC-1100W-PE)	N	N	N	2	N	N	N	N	N	N	N	N	N	N	N	N	N	N
CTO only	C6K4	Nexus PoE AC 1100W PSU - Port Side Intake (NXA-PAC-1100W-PI)	N	N	N	2	N	N	N	N	N	N	N	N	N	N	N	N	N	N
CTO only	C6JC	Nexus NEBs AC 1200W PSU - Port Side Exhaust (NXA-PAC-1200W-PE)	N	N	N	N	2	N	N	2	N	N	N	N	N	N	N	N	N	N
CTO only	C6JD	Nexus NEBs AC 1200W PSU - Port Side Intake (NXA-PAC-1200W-PI)	N	N	N	N	2	N	N	2	N	N	N	N	N	N	N	N	N	N
CTO only	C6J1	Nexus NEBs AC 650W PSU - Port Side Intake (NXA-PAC-650W-PI)	N	N	N	N	N	2	N	N	N	N	N	N	N	N	N	N	N	N
CTO only	C6J0	Nexus NEBs AC 650W PSU - Port Side Exhaust (NXA-PAC-650W-PE)	N	N	N	N	N	2	N	N	N	N	N	N	N	N	N	N	N	N
CTO only	C6J8	Nexus AC 750W PSU - Port Side Exhaust (NXA-PAC-750W-PE)	N	N	N	N	N	N	2	N	N	N	2	N	N	N	N	N	N	N
CTO only	C6J7	Nexus AC 750W PSU - Port Side Intake (NXA-PAC-750W-PI)	N	N	N	N	N	N	2	N	N	N	2	N	N	N	N	N	N	N
CTO only	C6JA	Nexus AC 1100W PSU - Port Side Exhaust (NXA-PAC-1100W-PE2)	N	N	N	N	N	N	2	N	N	2	2	2	N	2	N	N	N	N

Part number	Feature code	Description	10Gb			25Gb			50	100Gb			400Gb						
			9348GC-FX3	9348GC-FX3PH	93108TC-FX3	93108TC-FX3P	93216TC-FX2	93180YC-FX3	93240YC-FX2	93360YC-FX2	93400LD-H1	93600CD-GX	9336C-FX2	9336C-FX2-E	9364C-GX	9316D-GX	9332D-GX2B	9332D-H2R	9348D-GX2A
CTO only	C6J9	Nexus AC 1100W PSU - Port Side Intake (NXA-PAC-1100W-PI2)	N	N	N	N	N	2	N	N	2	2	2	N	2	N	N	N	N
CTO only	C6JH	Nexus AC 1400W PSU - Port Side Exhaust (NXA-PAC-1400W-PE)	N	N	N	N	N	N	N	2	N	N	N	N	N	N	N	N	N
CTO only	C6JJ	Nexus AC 1400W PSU - Port Side Intake (NXA-PAC-1400W-PI)	N	N	N	N	N	N	N	2	N	N	N	N	N	N	N	N	N
CTO only	C6KP	Nexus 9000 2KW AC Power Supply, Port-side Exhaust (NXA-PAC-2KW-PE)	N	N	N	N	N	N	N	N	N	N	N	2	N	N	N	N	N
CTO only	C6L0	Nexus 9000 2KW AC Power Supply, Port-side Intake (NXA-PAC-2KW-PI)	N	N	N	N	N	N	N	N	N	N	N	2	N	N	2	N	N
CTO only	C6KY	Nexus 1500W PSU Port-side Exhaust (NXA-PAC-1500W-PE)	N	N	N	N	N	N	N	N	N	N	N	N	N	2	N	N	N
CTO only	C6KX	Nexus 1500W PSU Port-side Intake (NXA-PAC-1500W-PI)	N	N	N	N	N	N	N	N	N	N	N	N	N	2	N	N	N
CTO only	C6L1	Nexus 9000 3200W Power Supply, Port-side Intake (NXA-PAC-3200W-PI)	N	N	N	N	N	N	N	N	N	N	N	N	N	N	N	2	2

## Power cords

The Cisco Nexus 9300 Series support the power cords listed in the following table.

Table 12. Power cords

Part number	Feature code	Description	10Gb			25Gb			50	100Gb			400Gb						
			9348GC-FX3	9348GC-FX3PH	93108TC-FX3	93108TC-FX3P	93216TC-FX2	93180YC-FX3	93240YC-FX2	93360YC-FX2	93400LD-H1	93600CD-GX	9336C-FX2	9336C-FX2-E	9364C-GX	9316D-GX	9332D-GX2B	9332D-H2R	9348D-GX2A
CTO only	C6FZ	ECO friendly green Option, no Power Cable will be shipped (NO-Power-Cord)	2	2	2	2	2	2	2	2	2	2	2	2	2	2	2	2	2
CTO only	C6GB	Cabinet Jumper Power Cord, 250 VAC 10A, C14-C13 Connectors (CAB-C13-CBN)	2	2	2	N	2	2	2	2	2	2	2	2	2	N	2	N	N

Part number	Feature code	Description	10Gb				25Gb			50	100Gb				400Gb					
			9348GC-FX3	9348GC-FX3PH	93108TC-FX3	93108TC-FX3P	93216TC-FX2	93180YC-FX3	93240YC-FX2	93360YC-FX2	93400LD-H1	93600CD-GX	9336C-FX2	9336C-FX2-E	9364C-GX	9316D-GX	9332D-GX2B	9332D-H2R	9348D-GX2A	9364D-GX2A
CTO only	C6KD	Cabinet Jumper Power Cord, 250 VAC 10A, C14-C15 Connectors (CAB-C15-CBN-CK)	N	N	N	2	N	N	N	N	N	N	N	N	N	2	N	N	N	
CTO only	C6KB	Cabinet Jumper Power Cord, 250 VAC 13A, C14-C15 Connectors (CAB-C15-CBN)	N	N	N	2	N	N	N	N	N	N	N	N	N	2	N	N	N	
CTO only	C6KC	Cabinet Jumper Power Cord, 250 VAC 13A, C14-C15 Connectors. (CAB-C15-CBN-EURA)	N	N	N	2	N	N	N	N	N	N	N	N	N	2	N	N	N	
CTO only	C6L2	Cabinet Jumper Power Cord, 250 VAC 16A, C20-C19 Connectors (CAB-C19-CBN)	N	N	N	N	N	N	N	N	N	N	N	N	N	N	N	2	2	
CTO only	C6HS	Japan Cabinet Jumper Power Cord, 250 VAC 12A, C14-C15 (CAB-C15-CBN-JP)	N	N	N	2	2	2	2	2	N	2	2	N	2	2	2	2	N	N
CTO only	C6GG	Power Cord C13-C14, 2M/6.5ft Japan PSE mark (CAB-C13-C14-2M-JP)	2	2	2	N	2	2	2	2	2	2	2	2	2	N	2	N	N	
CTO only	C6GA	Power Cord Jumper, C13-C14 Connectors, 2 Meter Length (CAB-C13-C14-2M)	2	2	2	N	2	2	2	2	2	2	2	2	2	N	2	N	N	
CTO only	C6GH	Power Cord Jumper, C13-C14 Connectors, 3 Meter Length, India (CAB-C13-C14-3M-IN)	2	2	2	N	N	2	N	2	2	2	2	N	2	N	2	N	N	
CTO only	C6GJ	Power Cord Jumper, C13-C14 Connectors, 1.4 Meter Length India (CAB-C13-C14-IN)	2	2	2	N	2	2	2	2	2	2	2	2	2	N	2	N	N	
CTO only	C6HC	Power Cord, C13 to C14 (recessed receptacle), 10A (CAB-C13-C14-AC)	2	2	2	N	2	2	2	2	N	2	2	2	2	2	N	2	N	N
CTO only	C6KQ	Recessed receptacle AC Power Cord 27in (CAB-C13-C14-JMPR)	N	N	N	N	N	N	N	N	N	N	N	2	N	N	N	N	N	
CTO only	C6J2	HVAC Power Cable with right angle Connector for RF-LS-25 (CAB-HVAC-RT-0.6M)	N	N	2	N	2	2	2	2	2	2	2	2	2	2	N	N	N	
CTO only	C6J3	HVAC Power Cable for Anderson-LS-25 (CAB-HVAC-SD-0.6M)	N	N	2	N	2	2	2	2	2	2	2	2	2	2	N	N	N	

## Accessory kits and Rack mount kits

The Cisco Nexus 9300 Series support the accessory kits listed in the following table.

Table 13. Accessory kits

Part number	Feature code	Description	10Gb				25Gb		50	100Gb				400Gb					
			9348GC-FX3	9348GC-FX3PH	93108TC-FX3	93108TC-FX3P	93216TC-FX2	93180YC-FX3	93240YC-FX2	93360YC-FX2	93400LD-H1	93600CD-GX	9336C-FX2	9336C-FX2-E	9364C-GX	9316D-GX	9332D-GX2B	9332D-H2R	9348D-GX2A
CTO only	C6GP	No Accessory Kit Chosen (NO-ACC-Kit)	1	1	1	1	1	1	1	N	1	1	1	1	1	1	1	2	N
CTO only	C6GM	Nexus 3K/9K Fixed Accessory Kit, 1RU Front and Rear removal (NXK-ACC-Kit-1RU)	1	1	1	1	N	1	1	N	1	1	1	N	1	1	1	N	N
CTO only	C6HV	Nexus 3K/9K Fixed Accessory Kit (N3K-C3064-ACC-Kit)	N	N	N	1	N	1	N	N	N	1	N	N	N	N	N	N	N
CTO only	C6JG	Nexus 9K Fixed Accessory Kit (N9K-C9300-ACK)	N	N	N	N	1	N	N	1	N	N	N	1	N	N	N	1	N
CTO only	C6LJ	Nexus 9K Fixed Accessory Kit, 2RU Front and Rear removal (NXK-ACC-Kit2-2RU)	N	N	N	N	N	N	N	N	N	N	N	N	N	N	N	1	1
CTO only	C6GN	Nexus Fixed Acc Kit w/ 2-post Rack Mount Kit for 9348GC-FXP (NXK-ACC-KIT-2P)	1	1	N	N	N	N	N	1	N	N	N	N	N	N	N	N	N
CTO only	C6KH	Nexus 9K Fixed Rack Mount Kit (N9K-C9300-RMK)	N	N	N	N	1	N	N	1	N	N	N	1	N	N	N	N	N
CTO only	C6LH	Nexus Dust Cover for QDD Ports (NXA-ACC-QDD-DC)	N	N	N	N	N	N	N	N	N	N	N	N	N	N	N	1	1

NXK-ACC-Kit-1RU contains the following:

- Front-mount brackets
- Rear-mount brackets
- Friction slider rails
- Ground lug kit

N3K-C3064-ACC-KIT contains the following:

- Front-mount angled brackets
- Rear-mount slider brackets
- Friction slider rails
- Ground lug kit

N9K-C9300-ACK contains the following:

- Console cable with DB9 and RJ45 connectors
- Ground lug kit

NXK-ACC-Kit2-2RU contains the following:

- Slider rails
- Ground lug kit

NXK-ACC-Kit-2P contains the following:

- Brackets for 2-post rack mount

N9K-C9300-RMK contains the following:

- Bottom-support rails (L-supports)

NXA-ACC-QDD-DC contains the following:

- 16x port dust covers

For more information, see these pages:

- [Accessory kits NXK-ACC-KIT-2P, NXK-ACC-KIT-1RU and N3K-C3064-ACC-KIT](#)
- [Accessory kit N9K-C9300-ACK](#)
- [Accessory kit NXK-ACC-Kit2-2RU](#)
- [Rack Mount Kit N9K-C9300-RMK](#)
- [Dust cover kit NXA-ACC-QDD-DC](#)

## Warranty and Services

The warranty support and all services will be performed by Cisco.

When ordering the switch, you will specify the following:

1. Cisco Support Duration
  - 3 Year – Cisco Service SLA is required, can purchase Cisco Software package (feature B0W1)
  - 5 year – Cisco Service SLA is required, can purchase Cisco Software package (feature B0W2)
2. Cisco Service SLA
  - 24x7 (Mon-Sun) , 4 hour Onsite response (feature C780)
  - 8x5 Next Business Day (Mon-Fri), Onsite response (feature C77Z)
3. Cisco Software Packages - see the [Software packages](#) section
  - Essentials (feature C783)
  - Advantage (feature C784)
  - Premier (feature C785)

## Related publications and links

For more information, see these resources:

- [Lenovo product web page for the Cisco offerings:](https://www.lenovo.com/us/en/servers-storage/solutions/cisco/)
- [Cisco Nexus 9300 product page:](https://www.cisco.com/site/us/en/products/networking/cloud-networking-switches/nexus-9300-series-switches/index.html)

## Notices

Lenovo may not offer the products, services, or features discussed in this document in all countries. Consult your local Lenovo representative for information on the products and services currently available in your area. Any reference to a Lenovo product, program, or service is not intended to state or imply that only that Lenovo product, program, or service may be used. Any functionally equivalent product, program, or service that does not infringe any Lenovo intellectual property right may be used instead. However, it is the user's responsibility to evaluate and verify the operation of any other product, program, or service. Lenovo may have patents or pending patent applications covering subject matter described in this document. The furnishing of this document does not give you any license to these patents. You can send license inquiries, in writing, to:

Lenovo (United States), Inc.  
8001 Development Drive  
Morrisville, NC 27560  
U.S.A.  
Attention: Lenovo Director of Licensing

LENOVO PROVIDES THIS PUBLICATION "AS IS" WITHOUT WARRANTY OF ANY KIND, EITHER EXPRESS OR IMPLIED, INCLUDING, BUT NOT LIMITED TO, THE IMPLIED WARRANTIES OF NON-INFRINGEMENT, MERCHANTABILITY OR FITNESS FOR A PARTICULAR PURPOSE. Some jurisdictions do not allow disclaimer of express or implied warranties in certain transactions, therefore, this statement may not apply to you.

This information could include technical inaccuracies or typographical errors. Changes are periodically made to the information herein; these changes will be incorporated in new editions of the publication. Lenovo may make improvements and/or changes in the product(s) and/or the program(s) described in this publication at any time without notice.

The products described in this document are not intended for use in implantation or other life support applications where malfunction may result in injury or death to persons. The information contained in this document does not affect or change Lenovo product specifications or warranties. Nothing in this document shall operate as an express or implied license or indemnity under the intellectual property rights of Lenovo or third parties. All information contained in this document was obtained in specific environments and is presented as an illustration. The result obtained in other operating environments may vary. Lenovo may use or distribute any of the information you supply in any way it believes appropriate without incurring any obligation to you.

Any references in this publication to non-Lenovo Web sites are provided for convenience only and do not in any manner serve as an endorsement of those Web sites. The materials at those Web sites are not part of the materials for this Lenovo product, and use of those Web sites is at your own risk. Any performance data contained herein was determined in a controlled environment. Therefore, the result obtained in other operating environments may vary significantly. Some measurements may have been made on development-level systems and there is no guarantee that these measurements will be the same on generally available systems. Furthermore, some measurements may have been estimated through extrapolation. Actual results may vary. Users of this document should verify the applicable data for their specific environment.

© Copyright Lenovo 2024. All rights reserved.

This document, LP2034, was created or updated on December 3, 2024.

Send us your comments in one of the following ways:

- Use the online Contact us review form found at:  
<https://lenovopress.lenovo.com/LP2034>
- Send your comments in an e-mail to:  
[comments@lenovopress.com](mailto:comments@lenovopress.com)

This document is available online at <https://lenovopress.lenovo.com/LP2034>.

## Trademarks

Lenovo and the Lenovo logo are trademarks or registered trademarks of Lenovo in the United States, other countries, or both. A current list of Lenovo trademarks is available on the Web at <https://www.lenovo.com/us/en/legal/copytrade/>.

The following terms are trademarks of Lenovo in the United States, other countries, or both:

Lenovo®

ThinkAgile®

ThinkSystem®

Other company, product, or service names may be trademarks or service marks of others.