

## Lenovo Flex System x240 Compute Node (7162)

### Product Guide (withdrawn product)

The Lenovo Flex System™ x240 Compute Node (machine type 7162) is a high-performance server that offers outstanding performance for virtualization with new levels of CPU performance and memory capacity, and flexible configuration options. With Intel Xeon E5-2600 v2 processors, the x240 Compute Node is an efficient server that is designed to run a broad range of workloads, armed with advanced management capabilities that allow you to manage your physical and virtual IT resources from a single pane of glass.

Suggested uses: Database, virtualization, enterprise applications, collaboration and email, streaming media, web, HPC, Microsoft RemoteFX, and cloud applications.

The Lenovo Flex System x240 Compute Node is shown in Figure 1.



Figure 1. Lenovo Flex System x240 Compute Node

### Did you know?

Flex System is a category of computing that integrates multiple server architectures, networking, storage, and system management capability into a single system that is easy to deploy and manage. Flex System has full built-in virtualization support of servers, storage, and networking to speed provisioning and increased resiliency. In addition, it supports open industry standards, such as operating systems, networking and storage fabrics, virtualization, and system management protocols to easily fit within existing and future data center environments. Flex System is scalable and extendable with multi-generation upgrades to protect and maximize IT investments.

## Key features

The Flex System x240 Compute Node is a high-availability, scalable compute node that is optimized to support the next-generation microprocessor technology. It is ideally suited for medium and large businesses. This section describes the key features of the server.

### Scalability and performance

The x240 offers the following features to boost performance, improve scalability, and reduce costs:

- Improves productivity by offering superior system performance with 12-core processors (up to 2.7 GHz core speeds), 10-core processors (up to 3.0 GHz core speeds), 8-core processors (up to 3.3 GHz core speeds), 6-core and 4-core processors (up to 3.5 GHz core speeds), up to 30 MB of L3 cache, and up to two 8 GT/s QPI interconnect links.
- Supports up to 2 processors, 24 cores, and 48 threads to maximize the concurrent execution of multithreaded applications.
- Supports up to 1866 MHz memory speeds.
- Up to 24 DIMM sockets are available for maximum scalability and performance.
- Supports up to 768 GB memory with 24x 32 GB LRDIMMs.
- Intelligent and adaptive system performance with Intel Turbo Boost Technology 2.0 allows CPU cores to run at maximum speeds during peak workloads by temporarily going beyond processor TDP.
- Intel Hyper-Threading Technology boosts performance for multi-threaded applications by enabling simultaneous multi-threading within each processor core, up to two threads per core.
- Intel Virtualization Technology integrates hardware-level virtualization hooks that allow operating system vendors to better use the hardware for virtualization workloads.
- Intel Advanced Vector Extensions (AVX) significantly improve floating point performance for compute-intensive technical and scientific applications compared with Intel Xeon 5600 series processors.
- The theoretical maximum memory bandwidth of the Intel Xeon processor E5 family is 51.6 GBps, which is 60% more than in the previous generation of Intel Xeon processors.
- The use of solid-state drives (SSDs) instead of or along with traditional spinning drives (HDDs) can significantly improve I/O performance. An SSD can support up to 100 times more I/O operations per second (IOPS) than a typical HDD.
- Supports the Storage Expansion Node providing another 12 hot-swap 2.5-inch drive bays for local storage.
- Up to 32 virtual I/O ports per compute node with integrated 10 Gb Ethernet ports, offering the choice of Ethernet, iSCSI, or Fibre Channel over Ethernet (FCoE) connectivity.
- The x240 offers PCI Express 3.0 I/O expansion capabilities that improve the theoretical maximum bandwidth by 60% (8 GT/s per link), compared with the previous generation of PCI Express 2.0.
- With Intel Integrated I/O Technology, the PCI Express 3.0 controller is integrated into the Intel Xeon processor E5 family. This integration helps to dramatically reduce I/O latency and increase overall system performance.
- Support for high-bandwidth I/O adapters, up to two in each x240 Compute Node. Support for 10 Gb Ethernet, 16 Gb Fibre Channel, and FDR InfiniBand.
- Supports the PCIe Expansion Node for support for up to six more I/O adapters.

### Availability and serviceability

The x240 provides the following features to simplify serviceability and increase system uptime:

- Chipkill, memory mirroring, and memory rank sparing for redundancy if there is a non-correctable memory failure.
- Tool-less cover removal provides easy access to upgrades and serviceable parts, such as CPU,

memory, and adapters.

- Hot-swap drives supporting integrated RAID 1 redundancy for data protection and greater system uptime.
- A light path diagnostics panel and individual light path LEDs to quickly lead the technician to failed (or failing) components. This panel and LEDs simplify servicing, speed up problem resolution, and helps improve system availability.
- Predictive Failure Analysis (PFA), which detects when system components (such as processors, memory, and hard disk drives) operate outside of standard thresholds and generates pro-active alerts in advance of possible failure, therefore increasing uptime.
- SSDs, which offer significantly better reliability than traditional mechanical HDDs for greater uptime.
- Built-in Integrated Management Module II (IMM2) continuously monitors system parameters, triggers alerts, and performs recovering actions in case of failures to minimize downtime.
- Built-in diagnostics that uses Dynamic Systems Analysis (DSA) Preboot speeds up troubleshooting tasks to reduce service time.
- Three-year customer replaceable unit and onsite limited warranty, next business day 9x5. Optional service upgrades are available.

### **Manageability and security**

The following powerful systems management features simplify local and remote management of the x240:

- The x240 includes an Integrated Management Module II (IMM2) to monitor server availability and perform remote management.
- Integrated industry-standard Unified Extensible Firmware Interface (UEFI) enables improved set up, configuration, and updates, and simplifies error handling.
- Integrated Trusted Platform Module (TPM) 1.2 support enables advanced cryptographic functionality, such as digital signatures and remote attestation.
- Industry-standard AES NI support for faster, stronger encryption.
- Integrates with the IBM® Flex System™ Manager for proactive systems management. It offers comprehensive systems management for the entire Flex System platform that help to increase uptime, reduce costs, and improve productivity through advanced server management capabilities.
- Intel Execute Disable Bit functionality can help prevent certain classes of malicious buffer overflow attacks when combined with a supporting operating system.
- Intel Trusted Execution Technology provides enhanced security through hardware-based resistance to malicious software attacks, which allows an application to run in its own isolated space protected from all other software running on a system.

### **Energy efficiency**

The x240 offers the following energy-efficiency features to save energy, reduce operational costs, increase energy availability, and contribute to the green environment:

- Component-sharing design of the Flex System chassis provides ultimate power and cooling savings.
- The Intel Xeon processor E5-2600 v2 product family offers significantly better performance over the E5-2600 family while fitting into the same thermal design power (TDP) limits.
- Intel Intelligent Power Capability powers individual processor elements on and off as needed to reduce power draw.
- Low-voltage Intel Xeon processors draw less energy to satisfy demands of power and thermally constrained data centers and telecommunication environments.
- Low-voltage 1.35 V DDR3 memory RDIMMs use 15% less energy than 1.5 V DDR3 RDIMMs.
- SSDs use as much as 80% less power than traditional spinning 2.5-inch HDDs.

- The x240 uses hexagonal ventilation holes, which are a part of Calibrated Vektored Cooling™ technology. Hexagonal holes can be grouped more densely than round holes, which provides more efficient airflow through the system.

## Locations of key components and connectors

The front of the server is shown in Figure 2.

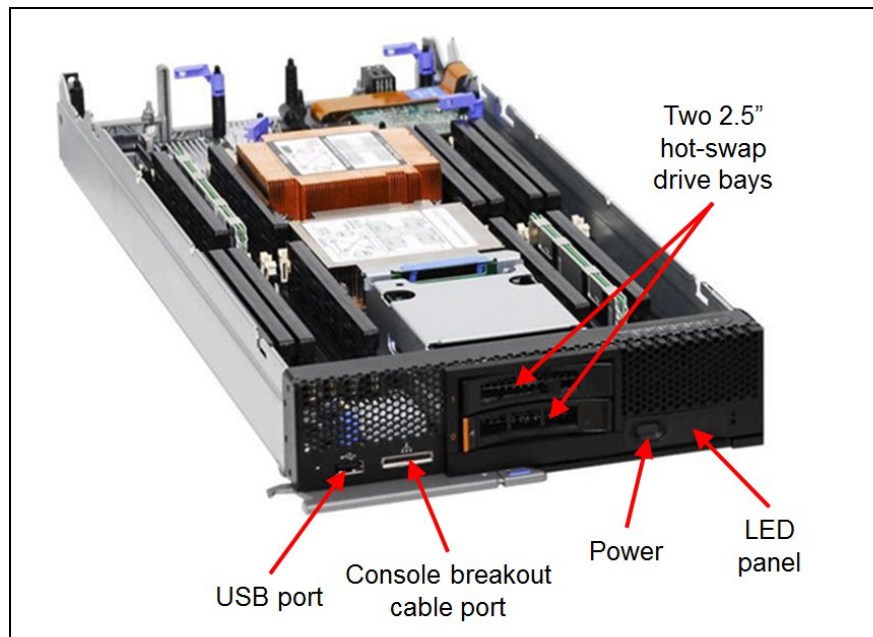


Figure 2. Front view of the Flex System x240 Compute Node

The locations of key components inside the server are shown in Figure 3.

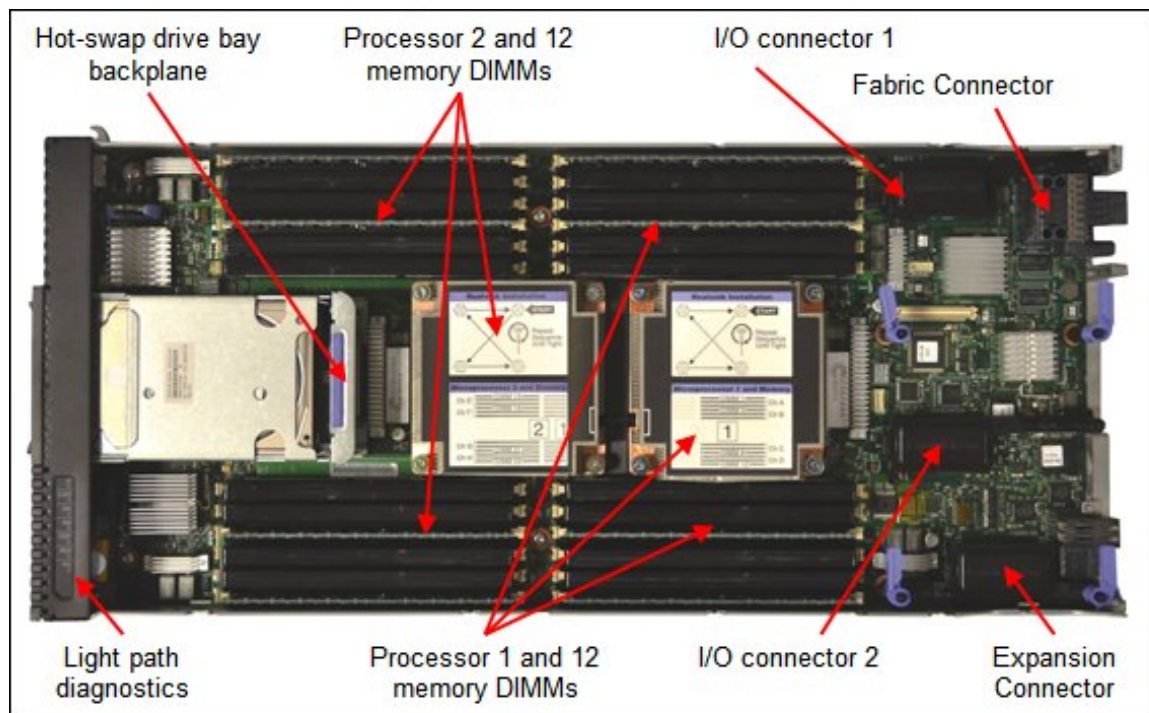


Figure 3. Inside view of the Flex System x240 Compute Node

## Standard specifications

The standard specifications are listed in the following table.

Table 1. Standard specifications

Components	Specification
Machine type	7162
Firmware	Lenovo-signed firmware
Form factor	Standard-width compute node.
Chassis support	Flex System Enterprise Chassis.
Processor	Up to 2 Intel Xeon processor E5-2600 v2 product family CPUs with 12 cores (up to 2.7 GHz), 10 cores (up to 3.0 GHz), 8 cores (up to 3.3 GHz), 6 cores (up to 3.5 GHz), or 4 cores (up to 3.5 GHz). Two QPI links up to 8.0 GT/s each. Up to 1866 MHz memory speed. Up to 30 MB L3 cache.
Chipset	Intel C600 series.
Memory	Up to 24 DIMM sockets (12 DIMMs per processor) that use Low Profile (LP) DDR3 DIMMs. RDIMMs, UDIMMs, and LRDIMMs supported. 1.5V and low-voltage 1.35V DIMMs supported. Support for up to 1600 MHz memory speed, depending on the processor. Four memory channels per processor (3 DIMMs per channel).
Memory maximums	With LRDIMMs: Up to 768 GB with 24x 32 GB LRDIMMs and two processors With RDIMMs: Up to 384 GB with 24x 16 GB RDIMMs and two processors With UDIMMs: Up to 64 GB with 16x 4 GB UDIMMs and two processors
Memory protection	Error correction code (ECC), Chipkill (for x4-based memory DIMMs), memory mirroring, and memory rank sparing.
Disk drive bays	Two 2.5-inch hot-swap SAS/SATA drive bays that support SAS, SATA, and SSD drives. Optional support for up to eight 1.8-inch SSDs. Up to 12 more 2.5-inch drive bays with the optional Storage Expansion Node.
Maximum internal storage	With two 2.5-inch hot-swap drives: Up to 2 TB with 1 TB 2.5-inch NL SAS HDDs, or up to 2.4 TB with 1.2 TB 2.5-inch SAS HDDs, or up to 2 TB with 1 TB 2.5-inch SATA HDDs, or up to 3.2 TB with 1.6 TB 2.5-inch SATA SSDs. An intermix of SAS and SATA HDDs and SSDs is supported. Alternatively, with 1.8-inch SSDs and ServeRAID M5115 RAID adapter, up to 6.4 TB with eight 800 GB 1.8-inch SSDs. More storage available with an attached Flex System Storage Expansion Node.
RAID support	RAID 0 and 1 with integrated LSI SAS2004 controller. Optional ServeRAID M5115 RAID controller with RAID 0, 1, 10, 5, and 50 support and 1 GB cache. Supports up to eight 1.8-inch SSDs with expansion kits. Optional flash-backup for cache, RAID 6/60, and SSD performance enabler.
Optical and tape bays	No internal bays; use an external USB drive. For more information about options, <a href="http://support.lenovo.com/en/documents/pd011281">http://support.lenovo.com/en/documents/pd011281</a>
Network interfaces	x4x models: Two 10 Gb Ethernet ports with Embedded 10Gb Virtual Fabric Ethernet LAN-on-motherboard (LOM) controller; Emulex BE3R based; FCoE/iSCSI support with Features on Demand (FoD) upgrade. x2x models: None standard; optional 1Gb or 10GbE adapters.
PCI Expansion slots	Two I/O connectors for adapters. PCI Express 3.0 x16 interface. Includes an Expansion Connector (PCIe 3.0 x16) to connect an expansion node, such as the PCIe Expansion Node. PCIe Expansion Node supports two full-height PCIe adapters, two low-profile PCIe adapters, and two Flex System I/O adapters. <b>Note:</b> The PCIe Expansion Node is now withdrawn from marketing.
Ports	USB ports: One external. Two internal for embedded hypervisor with optional USB Enablement Kit. Console breakout cable port that provides local KVM and serial ports (cable standard with chassis; more cables optional).
Systems management	UEFI, Integrated Management Module 2 (IMM2) with Renesas SH7758 controller, Predictive Failure Analysis, light path diagnostics panel, automatic server restart, remote presence. Support for Lenovo XClarity Administrator, Lenovo Energy Manager, and Lenovo ToolsCenter.

Components	Specification
Security features	Power-on password, administrator's password, Trusted Platform Module 1.2.
Video	Matrox G200eR2 video core with 16 MB video memory integrated into the IMM2. Maximum resolution is 1600x1200 at 75 Hz with 16 M colors.
Limited warranty	Three-year customer-replaceable unit and onsite limited warranty with 9x5/NBD.
Operating systems supported	Microsoft Windows Server, Red Hat Enterprise Linux, SUSE Linux Enterprise Server, VMware ESXi. See the <a href="#">Operating system support</a> section for specifics.
Service and support	Optional service upgrades are available through Lenovo Services: 4-hour or 2-hour response time, 8-hour fix time, 1-year or 2-year warranty extension, remote technical support for hardware and selected and original equipment manufacturer (OEM) software.
Dimensions	Width: 215 mm (8.5 in.), height 51 mm (2.0 in.), depth 493 mm (19.4 in.).
Weight	Maximum configuration: 6.98 kg (15.4 lb).

The x240 servers are shipped with the following items:

- Statement of Limited Warranty
- Important Notices
- Documentation CD that contains the *Installation and User's Guide*

## Standard models

The standard models are listed in Table 2.

Table 2. Standard models

Model	Intel Xeon Processor (2 maximum)**	Memory	Disk adapter	Disk bays†	Disks	10 GbE‡	I/O slots
Models with embedded 10 Gb Virtual Fabric Ethernet							
7162-A4x	1x E5-2609 v2 4C 2.5GHz 10MB 1333MHz 80W	1x 16 GB (1333 MHz)	LSI SAS2004	2x 2.5-inch hot-swap	Open	10 GbE Embedded	1 used / 2 max
7162-B4x	1x E5-2620 v2 6C 2.1GHz 15MB 1600MHz 80W	1x 16 GB 1600 MHz	LSI SAS2004	2x 2.5-inch hot-swap	Open	10 GbE Embedded	1 used / 2 max
7162-C4x	1x E5-2630 v2 6C 2.6GHz 15MB 1600MHz 80W	1x 16 GB 1600 MHz	LSI SAS2004	2x 2.5-inch hot-swap	Open	10 GbE Embedded	1 used / 2 max
7162-D4x	1x E5-2640 v2 8C 2.0GHz 20MB 1600MHz 95W	1x 16 GB 1600 MHz	LSI SAS2004	2x 2.5-inch hot-swap	Open	10 GbE Embedded	1 used / 2 max
7162-F4x	1x E5-2650L v2 10C 1.7GHz 25MB 1600MHz 70W	1x 16 GB 1600 MHz	LSI SAS2004	2x 2.5-inch hot-swap	Open	10 GbE Embedded	1 used / 2 max
7162-G4x	1x E5-2650 v2 8C 2.6GHz 20MB 1866MHz 95W	1x 16 GB 1866 MHz	LSI SAS2004	2x 2.5-inch hot-swap	Open	10 GbE Embedded	1 used / 2 max
7162-H4x	1x E5-2660 v2 10C 2.2GHz 25MB 1866MHz 95W	1x 16 GB 1866 MHz	LSI SAS2004	2x 2.5-inch hot-swap	Open	10 GbE Embedded	1 used / 2 max
7162-J4x	1x E5-2670 v2 10C 2.5GHz 25MB 1866MHz 115W	1x 16 GB 1866 MHz	LSI SAS2004	2x 2.5-inch hot-swap	Open	10 GbE Embedded	1 used / 2 max
7162-L4x	1x E5-2680 v2 10C 2.8GHz 25MB 1866MHz 115W	1x 16 GB 1866 MHz	LSI SAS2004	2x 2.5-inch hot-swap	Open	10 GbE Embedded	1 used / 2 max
7162-M4x	1x E5-2690 v2 10C 3.0GHz 25MB 1866MHz 130W	1x 16 GB 1866 MHz	LSI SAS2004	2x 2.5-inch hot-swap	Open	10 GbE Embedded	1 used / 2 max
7162-N4x	1x E5-2697 v2 12C 2.7GHz 30MB 1866MHz 130W	1x 16 GB 1866 MHz	LSI SAS2004	2x 2.5-inch hot-swap	Open	10 GbE Embedded	1 used / 2 max
Models without networking standard							
7162-B2x	1x E5-2620 v2 6C 2.1GHz 15MB 1600MHz 80W	1x 16 GB 1600 MHz	LSI SAS2004	2x 2.5-inch hot-swap	Open	Optional	0 used / 2 max
7162-G2x	1x E5-2650 v2 8C 2.6GHz 20MB 1866MHz 95W	1x 16 GB 1866 MHz	LSI SAS2004	2x 2.5-inch hot-swap	Open	Optional	0 used / 2 max
7162-J2x	1x E5-2670 v2 10C 2.5GHz 25MB 1866MHz 115W	1x 16 GB 1866 MHz	LSI SAS2004	2x 2.5-inch hot-swap	Open	Optional	0 used / 2 max

\* Processor detail: Processor quantity, model, cores, core speed, L3 cache, memory speed, and power TDP rating.

† The 2.5-inch drive bays can be replaced and expanded with 1.8-inch SSD bays and a ServeRAID M5115 RAID controller to support up to eight 1.8-inch SSDs.

‡ The x4x models include an Embedded 10Gb Virtual Fabric Ethernet controller; connections are routed by using a Fabric Connector. The Fabric Connector precludes the use of an I/O adapter in I/O connector 1.



## Chassis support

The Lenovo Flex System x240 Compute Node (machine type 7162) is supported in the Flex System chassis as listed in the following table.

Table 3. Chassis support

Chassis models	Description	Supports x240 (7162)
8721-HC1 based: 8721-A1x, LRx, DCx 8721-K1G, E1Y, E2Y	Lenovo Flex System Enterprise Chassis with CMM (68Y7030) standard	No
8721-HC2 based: 8721-ALx, DLx 8721-E3Y, E4Y	Lenovo Flex System Enterprise Chassis with CMM2 (00FJ669) standard	Yes
8721-A1x, LRx, DCx 8721-K1G, E1Y, E2Y with 68Y7030 replaced with 00FJ669	Lenovo Flex System Enterprise Chassis upgraded with CMM2	Yes
7385-DCx	Lenovo Flex System Carrier-Grade Chassis	No

Up to 14 x240 Compute Nodes can be installed in the chassis; however, the actual number that can be installed in a chassis depends on the following factors:

- The TDP power rating for the processors that are installed in the x240
- The number of power supplies that are installed in the chassis
- The capacity of the power supplies that are installed (2100 W or 2500 W)
- The chassis power redundancy policy that is used (N+1 or N+N)

The following table provides guidelines about the number of x240 Compute Nodes that can be installed. For more information, use the Power Configurator that is available at this website:

<http://ibm.com/systems/bladecenter/resources/powerconfig.html>

Consider the following points about the table:

- Green = No restriction on the number of x240 Compute Nodes that can be installed
- Yellow = Some bays must be left empty in the chassis

Table 4. Maximum number of x240 Compute Nodes installable based on power supplies installed and power redundancy policy used

x240 TDP rating	2100 W power supplies installed				2500 W power supplies installed			
	N+1, N=5 6 power supplies	N+1, N=4 5 power supplies	N+1, N=3 5 power supplies	N+N, N=3 6 power supplies	N+1, N=5 6 power supplies	N+1, N=4 5 power supplies	N+1, N=3 4 power supplies	N+N, N=3 6 power supplies
60 W	14	14	14	14	14	14	14	14
70 W	14	14	13	14	14	14	14	14
80 W	14	14	13	13	14	14	14	14
95 W	14	14	12	12	14	14	14	14
115 W	14	14	11	12	14	14	14	14
130 W	14	14	11	11	14	14	13	14
135 W	14	14	10	11	14	14	13	14

## Processor options

The x240 supports the processor options that are listed in the following table. The server supports one or two processors. The table also lists which server models have each processor standard, if any.

Table 4. Processor options

Part number	Feature code*	Intel Xeon processor description	Models where used
00Y2850	A4P9 / A4PW	Intel Xeon E5-2603 v2 4C 1.8GHz 10MB 1333MHz 80W	-
00Y2851	A4PA / A4PX	Intel Xeon E5-2609 v2 4C 2.5GHz 10MB 1333MHz 80W	A4x
00AE510	A4PQ / A4QB	Intel Xeon E5-2618L v2 6C 2.0GHz 15MB 1333MHz 50W (EMB)	-
00Y2852	A4PB / A4PY	Intel Xeon E5-2620 v2 6C 2.1GHz 15MB 1600MHz 80W	B2x, B4x
00AE513	A4PT / A4QE	Intel Xeon E5-2628L v2 8C 2.2GHz 20MB 1600MHz 70W (EMB)	-
00Y2853	A4PC / A4PZ	Intel Xeon E5-2630 v2 6C 2.6GHz 15MB 1600MHz 80W	C4x
00Y2864	A4PN / A4Q9	Intel Xeon E5-2630L v2 6C 2.4GHz 15MB 1600MHz 60W	-
00Y2861	A4PK / A4Q6	Intel Xeon E5-2637 v2 4C 3.5GHz 15MB 1866MHz 130W	-
00Y2854	A4PD / A4Q0	Intel Xeon E5-2640 v2 8C 2.0GHz 20MB 1600MHz 95W	D4x
00Y2862	A4PL / A4Q7	Intel Xeon E5-2643 v2 6C 3.5GHz 25MB 1866MHz 130W	-
00AE511	A4PR / A4QC	Intel Xeon E5-2648L v2 10C 2.0GHz 25MB 1866MHz 70W (EMB)	-
00Y2855	A4PP / A4Q1	Intel Xeon E5-2650 v2 8C 2.6GHz 20MB 1866MHz 95W	G2x, G4x
00Y2865	A4PE / A4QA	Intel Xeon E5-2650L v2 10C 1.7GHz 25MB 1600MHz 70W	F4x
00AE512	A4PS / A4QD	Intel Xeon E5-2658 v2 10C 2.4GHz 25MB 1866MHz 95W (EMB)	-
00Y2856	A4PF / A4Q2	Intel Xeon E5-2660 v2 10C 2.2GHz 25MB 1866MHz 95W	H4x
00Y2863	A4PM / A4Q8	Intel Xeon E5-2667 v2 8C 3.3GHz 25MB 1866MHz 130W**	-
00Y2857	A4PG / A4Q3	Intel Xeon E5-2670 v2 10C 2.5GHz 25MB 1866MHz 115W	J2x, J4x
00Y2858	A4PH / A4Q4	Intel Xeon E5-2680 v2 10C 2.8GHz 25MB 1866MHz 115W	L4x
00Y2859	A4PJ / A4Q5	Intel Xeon E5-2690 v2 10C 3.0GHz 25MB 1866MHz 130W	M4x
00Y2848	A4P7 / A4PU	Intel Xeon E5-2695 v2 12C 2.4GHz 30MB 1866MHz 115W	-
00Y2849	A4P8 / A4PV	Intel Xeon E5-2697 v2 12C 2.7GHz 30MB 1866MHz 130W	N4x

\* The first feature code is for processor 1 and second feature code is for processor 2.

\*\* Use of the Intel Xeon E5-2667 v2 processor in the Flex System x240 Compute Node is limited to 30 °C up to 914 m (3000 feet). Above 914 m (3000 feet), a de-rating of 1 °C for every 182 m (600 feet) should be applied. Use of the ServeRAID M5115 SAS/SATA RAID Controller with the E5-2667 v2 processor is not supported. Flex System configurations that use the E5-2667 v2 processor operate at acoustic levels that are significantly greater than typical Flex System levels, and the following noise hazard warning might apply: "Notice: Government regulations (such as those prescribed by OSHA or European Community Directives) may govern noise level exposure in the workplace and may apply to you and your server installation. The actual sound pressure levels in your installation depend upon a variety of factors, including the number of racks in the installation; the size, materials, and configuration of the room; the noise levels from other equipment; the room ambient temperature, and employees' location in relation to the equipment. Further, compliance with such government regulations also depends upon a variety of additional factors, including the duration of employees' exposure and whether employees wear hearing protection. Lenovo recommends that you consult with qualified experts in this field to determine whether you are in compliance with the applicable regulations."

## Memory options

DDR3 memory is compatibility tested and tuned for optimal performance and throughput. Memory specifications are integrated into the light path diagnostics for immediate system performance feedback and optimum system uptime. From a service and support standpoint, memory automatically assumes the system warranty and Lenovo provides service and support worldwide.

The memory options that are available for the x240 compute node with E5-2600 v2 processors are listed in the following table. DIMMs can be installed one at a time, but they should be installed in sets of four (one for each of the four memory channels) for performance reasons.

Table 5. Memory options for the x240 with E5-2600 v2 processors

Part number	Feature code	Description	Models where used
<b>Registered DIMMs (RDIMMs) - 1866 MHz</b>			
00D5048	A3QL	16GB (1x16GB, 2Rx4, 1.5V) PC3-14900 CL13 ECC DDR3 1866MHz LP RDIMM	All 1866 MHz models
00D5028	A3QF	4GB (1x4GB, 2Rx8, 1.5V) PC3-14900 CL13 ECC DDR3 1866MHz LP RDIMM	-
<b>Registered DIMMs (RDIMMs) - 1600 MHz</b>			
46W0672	A3QM	16GB (1x16GB, 2Rx4, 1.35V) PC3L-12800 CL11 ECC DDR3 1600MHz LP RDIMM	All 1600 MHz models
00D5036	A3QH	8GB (1x8GB, 1Rx4, 1.35V) PC3L-12800 CL11 ECC DDR3 1600MHz LP RDIMM	-
00D5024	A3QE	4GB (1x4GB, 1Rx4, 1.35V) PC3L-12800 CL11 ECC DDR3 1600MHz LP RDIMM	-
<b>Unbuffered DIMMs (UDIMMs)</b>			
00D5016	A3QC	8GB (1x8GB, 2Rx8, 1.35V) PC3L-12800 CL11 ECC DDR3 1600MHz LP UDIMM	-
00D5012	A3QB	4GB (1x4GB, 2Rx8, 1.35V) PC3L-12800 CL11 ECC DDR3 1600MHz LP UDIMM	-
<b>Load-reduced DIMMs (LRDIMMs)</b>			
46W0761	A47K	32GB (1x32GB, 4Rx4, 1.5V) PC3-14900 CL13 ECC DDR3 1866MHz LP LRDIMM	-

The x240 supports Low Profile (LP) DDR3 memory RDIMMs, UDIMMs, and LRDIMMs. The server supports up to 12 DIMMs when one processor is installed and up to 24 DIMMs when two processors are installed. Each processor has four memory channels, and there are three DIMMs per channel.

The following rules apply when the memory configuration is selected:

- Mixing 1.5 V and 1.35 V DIMMs in the same server is supported. In such a case, all DIMMs operate at 1.5 V.
- Mixing of different types of DIMMs (UDIMM , RDIMM and LRDIMM) in the same server is not supported.
- A maximum of eight ranks is supported per channel.
- The maximum quantity of DIMMs that can be installed in the server depends on the number of CPUs, DIMM rank, and operating voltage, as shown in the "Max. qty supported" row in the following table. The shaded cells indicate that the DIMM type supports the maximum number of DIMMs (24 for the x240).
- All DIMMs in all CPU memory channels operate at the same speed, which is determined as the lowest value of the following factors:
  - Memory speed that is supported by specific CPU.

- Lowest maximum operating speed for the selected memory configuration that depends on rated speed, as shown under the "Max. operating speed" section in the following table. The shaded cells indicate that the indicated speed is the maximum that the DIMM allows.

The following two tables (Part 1 and Part 2) show the maximum memory speeds that are achievable based on the installed DIMMs and the number of DIMMs per channel. The tables also show maximum memory capacity at any speed supported by the DIMM and maximum memory capacity at rated DIMM speed. In the tables, cells that are highlighted in gray indicate when the specific combination of DIMM voltage and number of DIMMs per channel still allows the DIMMs to operate at rated speed.

Table 6. Maximum memory speeds (Part 1: UDIMMs and LRDIMMs)

Specification	UDIMMs		LRDIMMs
Rank	Dual rank		Quad rank
Part numbers	00D5012 (4 GB) 00D5016 (8 GB)		46W0761 (32 GB)
Rated speed	1600 MHz		1866 MHz
Rated voltage	1.35 V		1.5 V
Operating voltage	1.35 V	1.5 V	1.5 V
Maximum quantity*	16	16	24
Largest DIMM	8 GB	8 GB	32 GB
Max memory capacity	128 GB	128 GB	768 GB
Max memory at rated speed	None	128 GB	512 GB
<b>Maximum operating speed (MHz)</b>			
One DIMM per channel	1333 MHz	1600 MHz	1866 MHz
Two DIMMs per channel	1333 MHz	1600 MHz	1866 MHz
Three DIMMs per channel	NS†	NS†	1333 MHz

\* The maximum supported quantity is shown for two processors installed. When one processor is installed, the maximum quantity is half of that shown.

† NS = Not supported. UDIMMs only support up to 2 DIMMs per channel.

Table 7. Maximum memory speeds (Part 2: Single-rank and dual-rank RDIMMs)

Specification	RDIMMs				
Rank	Single rank		Dual rank		
Part numbers	00D5024 (4 GB) 00D5036 (8 GB)		00D5044 (8 GB) 46W0672 (16 GB)		00D5028 (4 GB) 00D5040 (8 GB) 00D5048 (16 GB)
Rated speed	1600 MHz		1600 MHz		1866 MHz
Rated voltage	1.35 V		1.35 V		1.5 V
Operating voltage	1.35 V	1.5 V	1.35 V	1.5 V	1.5 V
Max quantity†	24	24	24	24	24
Largest DIMM	8 GB	8 GB	16 GB	16 GB	16 GB
Max memory capacity	192 GB	192 GB	384 GB	384 GB	384 GB
Max memory at rated speed	None	128 GB	None	256 GB	256 GB
<b>Maximum operating speed (MHz)</b>					
One DIMM per channel	1333 MHz	1600 MHz	1333 MHz	1600 MHz	1866 MHz
Two DIMMs per channel	1333 MHz	1600 MHz	1333 MHz	1600 MHz	1866 MHz
Three DIMMs per channel	1066 MHz	1066 MHz	1066 MHz	1333 MHz / 1066 MHz*	1333 MHz / 1066 MHz**

† The maximum quantity quantity that is shown for two processors installed. When one processor is installed, the maximum quantity quantity is half of that shown.

\* 00D5044 (8 GB) operates at 1066 MHz at three DIMMs per channel; 46W0672 (16 GB) operates at 1333 MHz at three DIMMs per channel

\*\* 00D5028 (4 GB) and 00D5040 (8 GB) operate at 1066 MHz at three DIMMs per channel; 00D5048 (16 GB) operates at 1333 MHz at three DIMMs per channel

The following memory protection technologies are supported:

- ECC
- Chipkill (for x4-based memory DIMMs; look for "x4" in the DIMM description)
- Memory mirroring
- Memory sparing

If memory mirroring is used, DIMMs must be installed in pairs (minimum of one pair per CPU), and both DIMMs in a pair must be identical in type and size.

If memory rank sparing is used, a minimum of one quad-rank DIMM or two single-rank or dual-rank DIMMs must be installed per populated channel (the DIMMs do not need to be identical). In rank sparing mode, one rank of a DIMM in each populated channel is reserved as spare memory. The size of a rank varies, depending on the DIMMs that are installed.

## Internal storage

The x240 server has two 2.5-inch hot-swap drive bays that are accessible from the front of the blade server (as shown in Figure 2). These bays connect to the integrated LSI SAS2004 6 Gbps SAS/SATA RAID-on-Chip (ROC) controller.

The integrated LSI SAS2004 ROC include the following features:

- A 4-port LSI SAS2004 controller with 6 Gbps throughput per port
- PCIe x4 Gen 2 host interface
- Two SAS ports that are routed internally to the two hot-swap drive bays
- Supports RAID-0, RAID-1 and RAID-1E

The x240 also supports up to eight 1.8-inch drives with the addition of the ServeRAID M5115 controller and SSD tray hardware. These components are described in the next section.

Supported drives are listed in the [Internal drive options](#) section.

## ServeRAID M5115 SAS/SATA controller

The x240 supports up to eight 1.8-inch SSDs combined with a ServeRAID M5115 SAS/SATA controller (part number 90Y4390). The M5115 attaches to the I/O adapter 1 connector and can be attached, even if the Compute Node Fabric Connector is installed (used to route the Embedded 10Gb Virtual Fabric Adapter to bays 1 and 2, as described in "I/O expansion options"). The ServeRAID M5115 cannot be installed if an adapter is installed in I/O adapter slot 1.

The ServeRAID M5115 supports the following combinations of 2.5-inch drives and 1.8-inch SSDs:

- Up to two 2.5-inch drives only
- Up to four 1.8-inch drives only
- Up to two 2.5-inch drives and up to four 1.8-inch SSDs
- Up to eight 1.8-inch SSDs

The ServeRAID M5115 SAS/SATA Controller (part number 90Y4390) provides an advanced RAID controller that supports RAID 0, 1, 10, 5, 50, and optional 6 and 60. It includes 1 GB of cache, which can be backed up to Flash when attached to the supercapacitor that is included with the optional ServeRAID M5100 Series Enablement Kit (part number 90Y4342).

At least one hardware kit is required with the ServeRAID M5115 controller. There are three hardware kits that are supported that enable specific drive support.

The ordering information for the controller and hardware kits is listed in the following table.

Table 8. ServeRAID M5115 and hardware kits

Part number	Feature code	Description	Maximum supported
90Y4390	A2XW	ServeRAID M5115 SAS/SATA Controller for Flex System	1
90Y4342	A2XX	ServeRAID M5100 Series Enablement Kit for Flex System x240	1
47C8808	A47D	ServeRAID M5100 Series Flex System Flash Kit v2 for x240	1
90Y4391	A2XZ	ServeRAID M5100 Series SSD Expansion Kit for Flex System x240	1

The hardware kits include the following features:

- ServeRAID M5100 Series Enablement Kit for Flex System x240 (part number 90Y4342)

This kit enables support for up to two 2.5-inch HDDs or SSDs in the hot-swap bays in the front of the server. It includes a CacheVault unit, which enables MegaRAID CacheVault flash cache protection. This enablement kit replaces the standard two-bay backplane (which is attached via the planar to an onboard controller) with a new backplane that attaches to an included flex cable to the M5115 controller. It also includes an air baffle, which also serves as an attachment for the CacheVault unit.

MegaRAID CacheVault flash cache protection uses NAND flash memory that is powered by a supercapacitor to protect data stored in the controller cache. This module eliminates the need for a lithium-ion battery that is commonly used to protect DRAM cache memory on PCI RAID controllers. To avoid the possibility of data loss or corruption during a power or server failure, CacheVault technology transfers the contents of the DRAM cache to NAND flash by using power from the supercapacitor. After the power is restored to the RAID controller, the saved data is transferred from the NAND flash back to the DRAM cache, which can then be flushed to disk.

**Tip:** The Enablement Kit is required only if 2.5-inch drives are to be used. This kit is not required if you plan to install four or eight 1.8-inch SSDs only.

- **ServeRAID M5100 Series Flex System Flash Kit v2 for x240** (part number 47C8808)  
This kit enables support for up to four 1.8-inch SSDs. This kit replaces the standard two-bay backplane with a four-bay SSD backplane that attaches to an included flex cable to the M5115 controller. Because only SSDs are supported, a CacheVault unit is not required; therefore, this kit does not have a supercap. This v2 kit provides support for the latest high-performance SSDs.

**Note:** The original ServeRAID M5100 Series Flex System Flash Kit for x240, 90Y4341 is not supported.

- **ServeRAID M5100 Series SSD Expansion Kit for Flex System x240** (part number 90Y4391)  
This kit enables support for up to four internal 1.8-inch SSDs. This kit includes two air baffles (left and right), which can attach two 1.8-inch SSD attachment locations and Flex cables for attachment to up to four 1.8-inch SSDs.

**Note:** The SSD Expansion Kit cannot be installed if the USB Enablement Kit (part number 49Y8119) is installed because these kits occupy the same location in the server.

The required kits for each combination of drives are listed in the following table. For example, if you plan to install eight 1.8-inch SSDs, you need the M5115 controller, Flash kit, and SSD Expansion kit.

Table 9. ServeRAID M5115 hardware kit usage matrix

Desired drive support			Components required			
Maximum number of 2.5-inch drives	Maximum number of 1.8-inch SSDs		ServeRAID M5115 90Y4390	Enablement Kit 90Y4342	Flash Kit v2 47C8808	SSD Expansion Kit 90Y4391
2	0	=>	Required	Required		
0	4 (front)	=>	Required		Required	
2	4 (internal)	=>	Required	Required		Required
0	8 (both)	=>	Required		Required	Required

How the ServeRAID M5115 and the Enablement Kit are installed in the server to support two 2.5-inch drives with MegaRAID CacheVault flash cache protection (row 1 of the preceding table) is shown in the following figure.

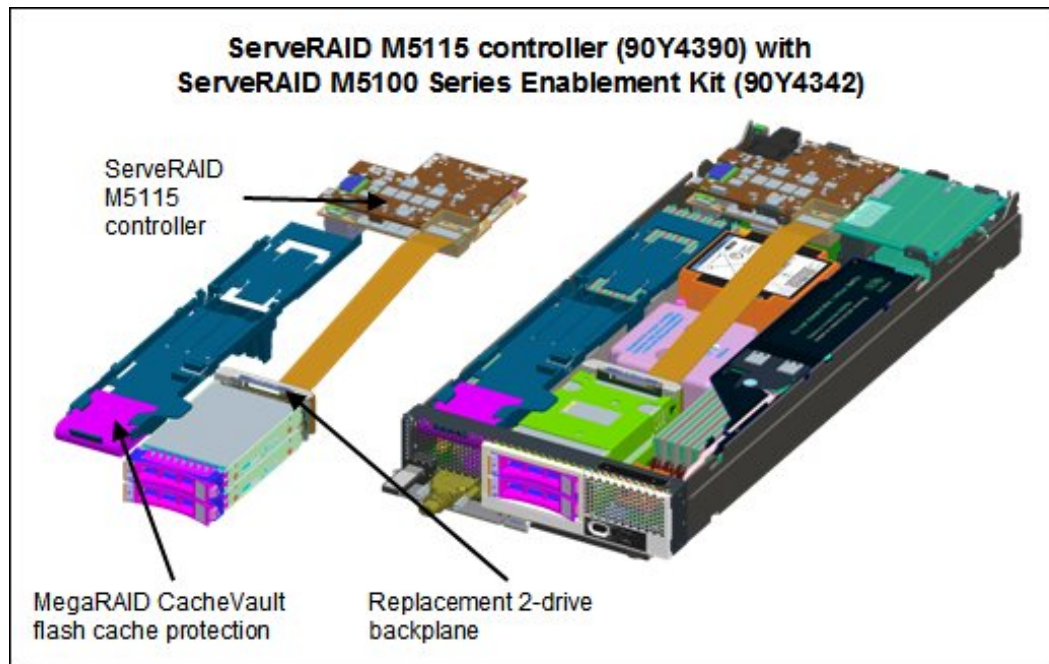


Figure 4. The ServeRAID M5115 and the Enablement Kit installed

How the ServeRAID M5115 and Flash and SSD Expansion Kits are installed in the server to support eight 1.8-inch SSDs (row 4 of the preceding table) is shown in the following table.

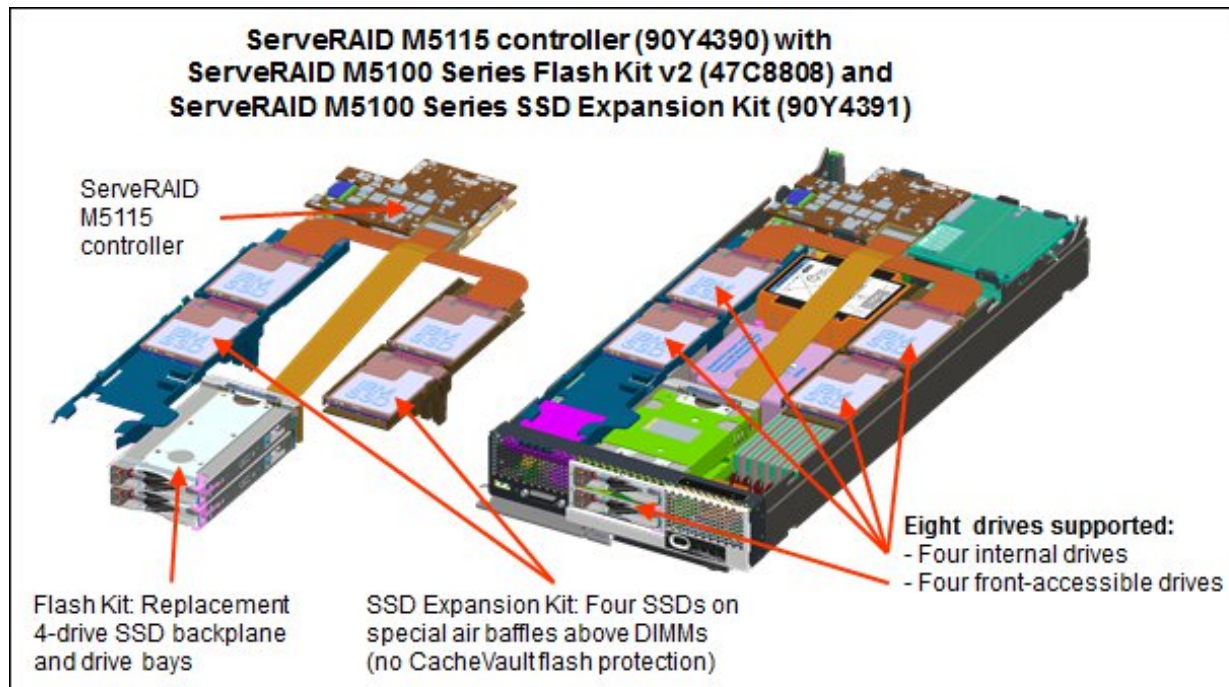


Figure 5. ServeRAID M5115 with Flash and SSD Expansion Kits installed

The eight SSDs are installed in the following locations:

- Four in the front of the system in place of the two 2.5-inch drive bays
- Two in a tray above one of the memory banks for CPU 1



- Two in a tray above one of the memory banks for CPU 2

The ServeRAID M5115 controller features the following specifications:

- Eight internal 6 Gbps SAS/SATA ports
- PCI Express 3.0 x8 host interface
- 6 Gbps throughput per port
- 800 MHz dual-core IBM PowerPC® processor with LSI SAS2208 6 Gbps RAID on Chip (ROC) controller
- Support for RAID levels 0, 1, 10, 5, 50 standard; support for RAID 6 and 60 with optional upgrade using 90Y4411
- Onboard 1 GB data cache (DDR3 running at 1333 MHz) with optional flash backup (MegaRAID CacheVault technology) as part of the Enablement Kit 90Y4342.
- Support for SAS and SATA HDDs and SSDs
- Support for intermixing SAS and SATA HDDs and SSDs; mixing different types of drives in the same array (drive group) is not recommended
- Support for self-encrypting drives (SEDs) with MegaRAID SafeStore
- Optional support for SSD performance acceleration with MegaRAID FastPath and SSD caching with MegaRAID CacheCade Pro 2.0 (part number 90Y4447)
- Support for up to 64 virtual drives, up to 128 drive groups, up to 16 virtual drives per one drive group, and up to 32 physical drives per one drive group
- Support for logical unit number (LUN) sizes up to 64 TB
- Configurable stripe size up to 1 MB
- Compliant with Disk Data Format (DDF) configuration on disk (COD)
- S.M.A.R.T. support
- MegaRAID Storage Manager management software

Optional add-ons to the ServeRAID M5115 controller are RAID 6 support, SSD performance accelerator, and SSD caching enabler. The feature upgrades (which are FoD license upgrades) are as listed in the following table.

Table 10. Supported upgrade features

Part number	Feature code	Description	Maximum supported
90Y4410	A2Y1	ServeRAID M5100 Series RAID 6 Upgrade for Flex System	1
90Y4412	A2Y2	ServeRAID M5100 Series Performance Upgrade for Flex System (MegaRAID FastPath)	1
90Y4447	A36G	ServeRAID M5100 Series SSD Caching Enabler for Flex System (MegaRAID CacheCade Pro 2.0)	1

These upgrades include the following features:

- RAID 6 Upgrade (part number 90Y4410)  
Adds support for RAID 6 and RAID 60. This is an FoD license.
- Performance Upgrade (part number 90Y4412)  
The Performance Upgrade for Flex System (which is implemented by using the LSI MegaRAID FastPath software) provides high-performance I/O acceleration for SSD-based virtual drives by exploiting an extremely low-latency I/O path to increase the maximum I/O per second (IOPS) capability of the controller. This feature boosts the performance of applications with a highly random data storage access pattern, such as transactional databases. This part number is an FoD license.

- **SSD Caching Enabler for traditional hard drives (part number 90Y4447)**  
The SSD Caching Enabler for Flex System (implemented by using the LSI MegaRAID CacheCade Pro 2.0) is designed to accelerate the performance of HDD arrays with only an incremental investment in SSD technology. The feature enables the SSDs to be configured as a dedicated cache to help maximize the I/O performance for transaction-intensive applications, such as databases and web serving. The feature tracks data storage access patterns and identifies the most frequently accessed data. The hot data is then automatically stored on the SSDs that are assigned as a dedicated cache pool on the ServeRAID controller. This part number is an FoD license. This feature requires at least one SSD drive be installed.

**Note:** Not all SSDs support SSD Caching Enabler (CacheCade) feature. For more information, see this website:

<http://ibm.com/support/entry/portal/docdisplay?Indocid=MIGR-5094754>

## Internal drive options

The 2.5" drive bays support SAS or SATA hard disk drives (HDDs) or solid-state drives (SSDs). The following table lists the supported 2.5" drive options that are currently available.

**SSDs withdrawn:** All supported 1.8-inch solid-state drives and 2.5-inch solid-state drives are now withdrawn from marketing.

Table 11. 2.5-inch hot-swap 6 Gb SAS/SATA HDDs

Part number	Feature	Description	Maximum supported
2.5-inch hot-swap HDDs - 6 Gb SAS 10K			
90Y8877	A2XC	300GB 10K 6Gbps SAS 2.5" SFF G2HS HDD	2
90Y8872	A2XD	600GB 10K 6Gbps SAS 2.5" SFF G2HS HDD	2
2.5-inch hot-swap HDDs - 6 Gb NL SAS			
90Y8953	A2XE	500GB 7.2K 6Gbps NL SAS 2.5" SFF G2HS HDD	2
2.5-inch hot-swap SED HDDs - 6 Gb SAS 10K			
90Y8913	A2XF	300GB 10K 6Gbps SAS 2.5" SFF G2HS SED	2
90Y8908	A3EF	600GB 10K 6Gbps SAS 2.5" SFF G2HS SED	2

## Flex System Storage Expansion Node

The x240 supports the attachment of the Flex System Storage Expansion Node. The Flex System Storage Expansion Node provides the ability to attach 12 more hot-swap 2.5-inch HDDs or SSDs locally to the attached compute node. The Storage Expansion Node provides storage capacity for Network Attach Storage (NAS) workloads, which provides flexible storage to match capacity, performance, and reliability needs.

Model 7162-HBx includes the Storage Expansion Node as standard as listed in [Table 2](#). All other models support the SEN as an option.

The following figure shows the Flex System Storage Expansion Node attached to a compute node.



Figure 6. Flex System Storage Expansion Node (right) attached to a compute node (left)

The ordering information for the Storage Expansion Node is listed in the following table.

Table 12. Ordering part number and feature code

Part number	Feature code	Description	Maximum supported
68Y8588	A3JF	Flex System Storage Expansion Node	1

The Storage Expansion Node includes the following features:

- Connects directly to supported compute nodes via a PCIe 3.0 interface to the compute node's expansion connector (for more information, see Figure 3)
- Support for 12 hot-swap 2.5-inch drive, accessible via a sliding tray
- Support for 6 Gbps SAS and SATA drives (HDDs and SSDs)
- Based on an LSI SAS2208 6 Gbps RAID on Chip (ROC) controller
- Supports RAID 0, 1, 5, 10, and 50 as standard. JBOD also supported. Optional RAID 6 and 60 with an FoD upgrade.
- Optional 512 MB or 1 GB cache with cache-to-flash super capacitor offload

**Note:** The use of the Storage Expansion Node requires that the x240 Compute Node have both processors installed.

For more information, see the Lenovo Press Product Guide, which is available at this website: <http://lenovopress.com/tips0914>

## Internal tape drives

The server does not support an internal tape drive. However, it can be attached to external tape drives by using Fibre Channel connectivity.

## Optical drives

The server does not support an internal optical drive option; however, you can connect an external USB optical drive. For information about available external optical drives from Lenovo, see this website: <http://support.lenovo.com/en/documents/pd011281>

**Note:** The USB port on the compute nodes supply up to 0.5 A at 5 V. For devices that require more power, another power source is required.

## Embedded 10Gb Virtual Fabric Adapter

Some models of the x240 (those with a model of the form 7162-x4x) include an Embedded 10Gb Virtual Fabric Adapter (VFA, also known as LAN on Motherboard or LOM) built into the system board. The models of the x240 that include the Embedded 10Gb Virtual Fabric Adapter are listed in Table 2. Each x240 model that includes the embedded 10Gb VFA also has the Compute Node Fabric Connector installed in I/O connector 1 (and physically screwed onto the system board) to provide connectivity to the Enterprise Chassis midplane. Figure 3 shows the location of the Fabric Connector.

The Fabric Connector enables port 1 on the embedded 10Gb VFA to be routed to I/O module bay 1 and port 2 to be routed to I/O module bay 2. The Fabric Connector can be unscrewed and removed (if required) to allow the installation of an I/O adapter on I/O connector 1.

The Embedded 10Gb VFA is based on the Emulex BladeEngine 3R (BE3R), which is a single-chip, dual-port 10 Gigabit Ethernet (10GbE) Ethernet Controller.

The Embedded 10Gb VFA includes the following features:

- PCI-Express Gen2 x8 host bus interface
- Supports connection to 10 Gb and 1 Gb Flex System Ethernet switches
- Supports multiple virtual NIC (vNIC) functions
- TCP/IP Offload Engine (TOE enabled)
- SR-IOV capable
- RDMA over TCP/IP capable
- iSCSI and FCoE upgrade offering via FoD

The ordering information for the Virtual Fabric Advanced Software Upgrade (LOM), which enables the iSCSI and FCoE support on the Embedded 10Gb Virtual Fabric Adapter, is listed in the following table.

**Withdrawn:** Virtual Fabric Advanced Software Upgrade (LOM) is now withdrawn from marketing.

Table 13. FoD upgrade for FCoE and iSCSI support

Part number	Feature code	Description	Maximum supported
90Y9310	A2TD	Virtual Fabric Advanced Software Upgrade (LOM)	1

## I/O expansion options

The x240 has two I/O expansion connectors for attaching I/O adapters. There is a third expansion connector that is designed to connect an expansion node, such as the PCIe Expansion Node. The I/O expansion connectors are a high-density, 216-pin PCIe connector. Installing I/O adapters allows the server to connect with switch modules in the Flex System Enterprise Chassis. Each slot has a PCI Express 3.0 x16 host interface and both slots support the same form-factor adapters.

The location of the I/O expansion connectors is shown in the following figure.

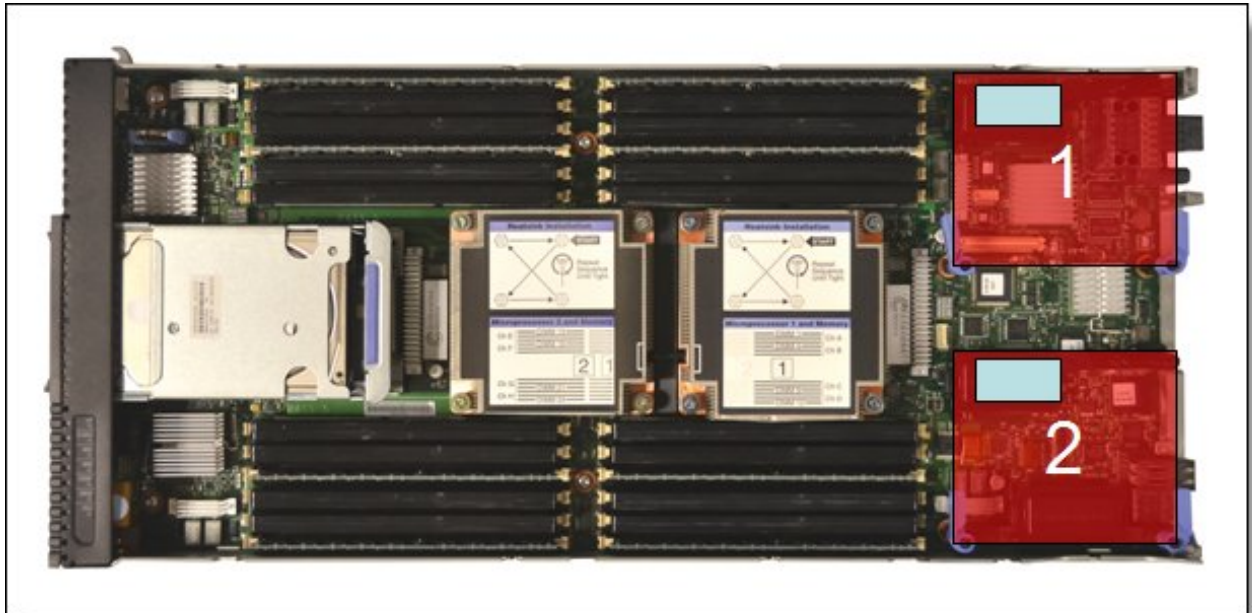


Figure 7. Location of the I/O adapter slots in the Flex System x240 Compute Node

All I/O adapters are the same shape and can be used in any available slot.. A compatible switch or pass-through module must be installed in the corresponding I/O bays in the chassis, as listed in the following table. Installing two switches means that all ports of the adapter are enabled, which improves performance and network availability.

Table 14. Adapter to I/O bay correspondence

I/O adapter slot in the server	Port on the adapter	Corresponding I/O module bay in the chassis
Slot 1	Port 1	Module bay 1
	Port 2	Module bay 2
	Port 3 (for 4-port cards)	Module bay 1
	Port 4 (for 4-port cards)	Module bay 2
Slot 2	Port 1	Module bay 3
	Port 2	Module bay 4
	Port 3 (for 4-port cards)	Module bay 3
	Port 4 (for 4-port cards)	Module bay 4

The location of the switch bays in the Flex System Enterprise Chassis is shown in the following figure.

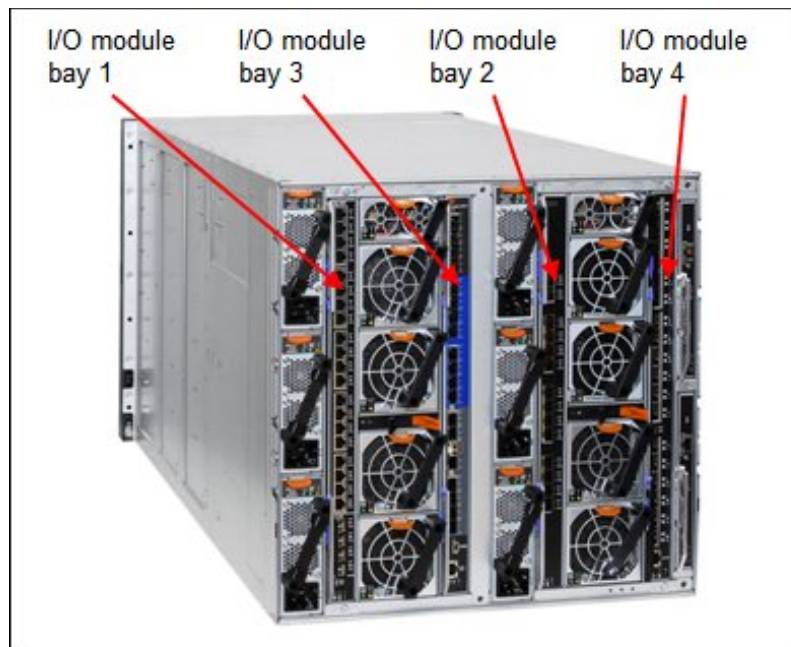


Figure 8. Location of the switch bays in the Flex System Enterprise Chassis

How two-port adapters are connected to switches that are installed in the chassis is shown in the following figure.

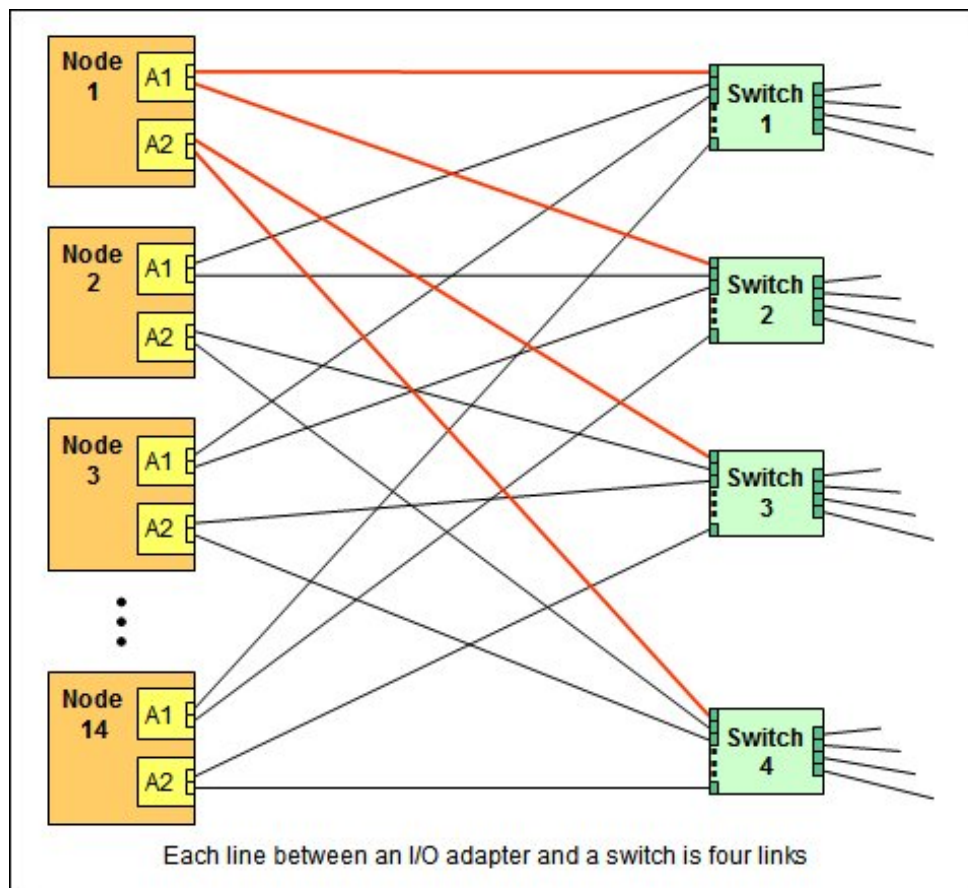


Figure 9. Logical layout of the interconnects between I/O adapters and I/O modules



## Network adapters

As described in "Embedded 10Gb Virtual Fabric Adapter," certain models (those with a model number of the form 7162-x4x) have a 10Gb Ethernet controller on the system board. Its ports are routed to the midplane and switches installed in the chassis via a Compute Node Fabric Connector that takes the place of an adapter in I/O slot 1.

Models without the Embedded 10Gb Virtual Fabric Adapter (those with a model number of the form 7162-x2x) do not include any other Ethernet connections to the Enterprise Chassis midplane as standard. Therefore, for those models, an I/O adapter must be installed in I/O connector 1 or I/O connector 2 to provide network connectivity between the server and the chassis midplane and, ultimately, to the network switches.

The supported network adapters and upgrades are listed in the following table. Adapters can be installed in either slot. However, compatible switches must be installed in the corresponding bays of the chassis. All adapters can also be installed in the PCIe Expansion Node. The number of adapter than can be installed in the server and in the PCIe Expansion Node (PEN) is indicated in the "Maximum supported" column.

Table 15. Network adapters

Part number	Feature code	Description	Number of ports	Maximum supported (x240** / PEN)
40 Gb Ethernet				
90Y3482	A3HK	Flex System EN6132 2-port 40Gb Ethernet Adapter	2	2 / None
10 Gb Ethernet				
00AG530	A5RN	Flex System EN4172 2-port 10Gb Ethernet Adapter	2	2 / 2
00JY800	A5RP	Flex System CN4052 2-port 10Gb Virtual Fabric Adapter	2	2 / 2
00JY804	A5RV	Flex System CN4052 Virtual Fabric Adapter SW Upgrade (Features on Demand upgrade for 00JY800)	License	2 / 2
00AG590	ATBS	Flex System CN4054S 4-port 10Gb Virtual Fabric Adapter	4	2 / 2
00AG594	ATBU	Flex System CN4054S 4-port 10Gb Virtual Fabric Adapter SW Upgrade (FoD upgrade for 00AG590)	License	2 / 2
94Y5160	A4R6	Flex System CN4058S 8-port 10Gb Virtual Fabric Adapter	8	2 / 2
94Y5164	A4R9	Flex System CN4058S Virtual Fabric Adapter SW Upgrade (Features on Demand upgrade for 94Y5160)	License	2 / 2
88Y5920	A4K3	Flex System CN4022 2-port 10Gb Converged Adapter	2	2 / 2
90Y3466	A1QY	Flex System EN4132 2-port 10 Gb Ethernet Adapter	2	2 / 2
1 Gb Ethernet				
49Y7900	A10Y	Flex System EN2024 4-port 1 Gb Ethernet Adapter	4	2 / 2
InfiniBand				
90Y3454	A1QZ	Flex System IB6132 2-port FDR InfiniBand Adapter	2	2 / 2

\* Withdrawn from marketing

\*\* For x4x models (where the Embedded 10Gb Virtual Fabric Adapter standard), only one extra adapter can be installed in the compute node.

For more information about adapter-to-switch compatibility, see the Flex System Interoperability Guide that is available at this website:

<http://lenovopress.com/fsig>

## Storage host bus adapters

The storage HBAs that are supported by the x240 server (internally in the compute node and in the PCIe Expansion Node) are listed in the following table.

Table 16. Storage adapters

Part number	Feature code	Description	Number of ports	Maximum supported (x240* / PEN)
Fibre Channel				
95Y2386	A45R	Flex System FC5052 2-port 16Gb FC Adapter	2	2 / 2
95Y2391	A45S	Flex System FC5054 4-port 16Gb FC Adapter	4	2 / 2
69Y1942	A1BQ	Flex System FC5172 2-port 16Gb FC Adapter	2	2 / 2
69Y1938	A1BM	Flex System FC3172 2-port 8Gb FC Adapter	2	2 / 2
95Y2375	A2N5	Flex System FC3052 2-port 8Gb FC Adapter	2	2 / 2

\* For x4x models (where the Embedded 10Gb Virtual Fabric Adapter standard) and for xMx models (where a CN4022 2-port 10Gb Converged Adapter is standard), only one extra adapter can be installed in the compute node.

For more information about adapter-to-switch compatibility, see the Flex System Interoperability Guide that is available at this website:

<http://lenovopress.com/fsig>

## PCIe SSD adapters

The compute node supports the PCIe Flash Storage Adapters when installed in an attached PCIe Expansion Node (PEN), however the PEN is now withdrawn from marketing.

For customers who already have x240 compute nodes with attached PCIe Expansion Nodes, see the PCIe Expansion Node Product Guide for details about supported adapters: <https://lenovopress.com/tips0906-flex-system-pcie-expansion-node>

## GPUs and coprocessors

The compute node supports GPUs when installed in an attached PCIe Expansion Node (PEN), however the PEN is now withdrawn from marketing.

For customers who already have x240 compute nodes with attached PCIe Expansion Nodes, see the PCIe Expansion Node Product Guide for details about supported adapters: <https://lenovopress.com/tips0906-flex-system-pcie-expansion-node>

## Power supplies

Server power is derived from the power supplies that are installed in the chassis. There are no server options regarding power supplies.



## Integrated virtualization

The x240 supports the ESXi hypervisor on a USB memory key via the x240 USB Enablement Kit. This kit offers two internal USB ports. The x240 USB Enablement Kit and the supported USB memory keys are listed in the following table.

**Withdrawn from marketing:** x240 USB Enablement Kit is now withdrawn from marketing.

Table 17. Virtualization options

Part number	Feature code	Description	Maximum supported
49Y8119	A3A3	x240 USB Enablement Kit	1
41Y8298	A2G0	Blank USB Memory Key for VMware ESXi Downloads	2
41Y8300	A2VC	USB Memory Key for VMware ESXi 5.0	1
41Y8307	A383	USB Memory Key for VMware ESXi 5.0 Update1	1
41Y8311	A2R3	USB Memory Key for VMware ESXi 5.1	1
41Y8382	A4WZ	USB Memory Key for VMware ESXi 5.1 Update 1	1
41Y8385	A584	USB Memory Key for VMware ESXi 5.5	1

There are two types of USB keys, preloaded keys or blank keys. By using blank keys, you can download a Lenovo customized version of ESXi and load it onto the key. Preload keys are shipped with a specific version of ESXi already loaded. The x240 supports one or two keys installed, but only the following combinations:

- One preload key
- One blank key
- One preload key and one blank key
- Two blank keys

**Note:** A two preload keys combination is not supported.

Having two keys installed provides a backup boot device. Both devices are listed in the boot menu, which allows you to boot from either device or to set one as a backup in case the first one gets corrupted.

Installing two preloaded keys prevents ESXi from booting. For more information, see this website:  
<http://kb.vmware.com/kb/1035107>

**Note:** The x240 USB Enablement Kit and USB memory keys are not supported if the SSD Expansion Kit (part number 90Y4391) is installed because these kits occupy the same location in the server.

## Light path diagnostics

For quick problem determination when located physically at the server, the x240 offers the following three-step guided path:

1. The Fault LED on the front panel.
2. The light path diagnostics panel, as shown in the following figure.
3. LEDs next to key components on the system board.

The x240 light path diagnostics panel is visible when you remove the server from the chassis. The panel is on the top, right-hand side of the compute node, as shown in the following figure.



Figure 10. Location of x240 light path diagnostics panel

To illuminate the light path diagnostics LEDs, power off the compute node, slide it out of the chassis, and press the power button. The power button doubles as the light path diagnostics remind button when the server is removed from the chassis.

The meanings of the LEDs in the light path diagnostics panel are listed in the following table.

Table 18. Light path diagnostic panel LEDs

LED	Meaning
LP	The light path diagnostics panel is operational.
S BRD	A system board error is detected.
MIS	A mismatch occurred between the processors, DIMMs, or HDDs within the configuration as reported by POST.
NMI	A non maskable interrupt (NMI) occurred.
TEMP	An over-temperature condition occurs that was critical enough to shut down the server.
MEM	A memory fault occurred. The corresponding DIMM error LEDs on the system board are also lit.
ADJ	A fault is detected in the adjacent expansion unit (if installed).

## Remote management

Lenovo XClarity Administrator is a centralized resource management solution designed to reduce complexity, speed response, and enhance the availability of Lenovo systems and solutions.

Lenovo XClarity Administrator provides agent-free hardware management for ThinkServer, System x and Flex System servers. The administration dashboard, shown in the following figure, based on HTML 5, allows fast location of resources so tasks can be run quickly.

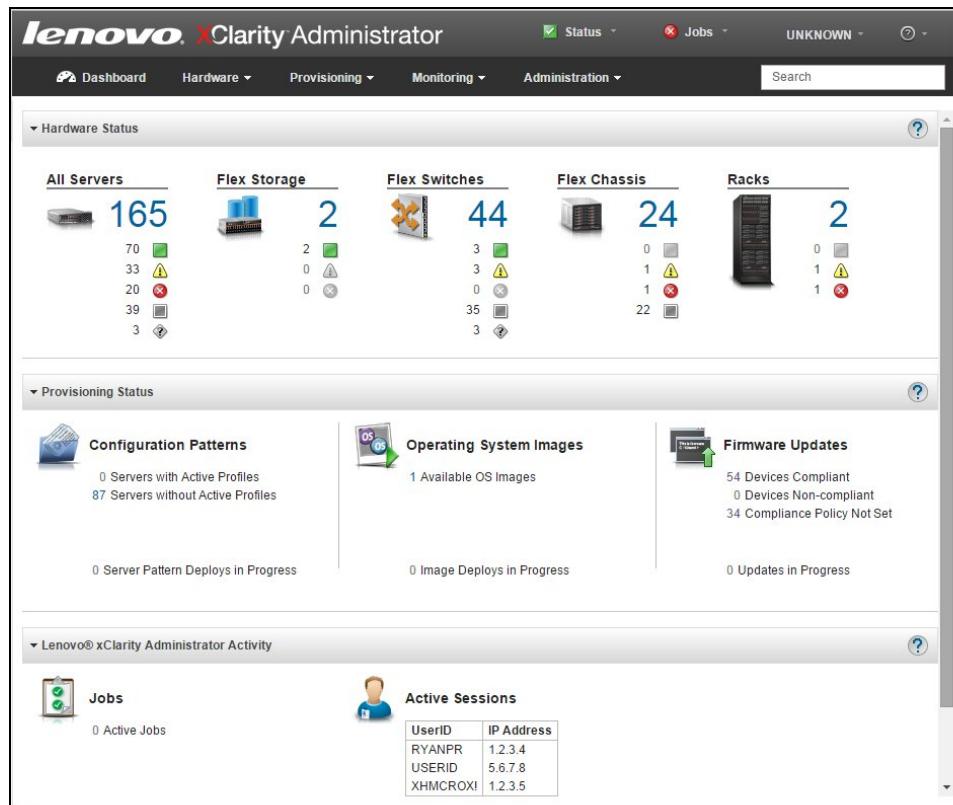


Figure 11. Lenovo XClarity Administrator dashboard

Because Lenovo XClarity Administrator does not include any agent software that must be installed on the managed endpoints, there are no CPU cycles spent on agent execution and no memory is used, which means that up to 1GB of RAM and 1 - 2% CPU usage is saved, compared to a typical managed system where an agent is required.

Lenovo XClarity Administrator supports the following functions with Flex System systems:

- Discovery
- Inventory
- Monitoring and alerting
- Call home
- Centralized user management
- Cryptography modes, server certificates, and encapsulation
- Configuration patterns
- Operating system deployment
- Firmware updates

For more information about Lenovo XClarity Administrator, including ordering part numbers, see the Lenovo XClarity Administrator Product Guide:

<https://lenovopress.com/tips1200-lenovo-xclarity-administrator>

The server contains an IMM2, which interfaces with the advanced management module in the chassis. The combination of these components provides advanced service-processor control, monitoring, and an alerting function. If an environmental condition exceeds a threshold or if a system component fails, LEDs on the system board are lit to help you diagnose the problem, the error is recorded in the event log, and you are alerted to the problem. A virtual presence capability comes standard for remote server management.

Remote server management is provided through the following industry-standard interfaces:

- Intelligent Platform Management Interface (IPMI) Version 2.0
- Simple Network Management Protocol (SNMP) Version 3
- Common Information Model (CIM)
- Web browser

The server also supports virtual media and remote control features, which provide the following functions:

- Remotely viewing video with graphics resolutions up to 1600x1200 at 75 Hz with up to 23 bits per pixel, regardless of the system state
- Remotely accessing the server by using the keyboard and mouse from a remote client
- Mapping the CD or DVD drive, diskette drive, and USB flash drive on a remote client, and mapping ISO and diskette image files as virtual drives that are available for use by the server
- Uploading a diskette image to the IMM2 memory and mapping it to the server as a virtual drive
- Capturing blue-screen errors

## Operating system support

The server supports the following operating systems:

- Microsoft Windows Server 2012
- Microsoft Windows Server 2012 R2
- Red Hat Enterprise Linux 6.10 x64
- Red Hat Enterprise Linux 6.6 x64
- Red Hat Enterprise Linux 6.7 x64
- Red Hat Enterprise Linux 6.8 x64
- Red Hat Enterprise Linux 7.0
- Red Hat Enterprise Linux 7.1
- Red Hat Enterprise Linux 7.2
- Red Hat Enterprise Linux 7.3
- Red Hat Enterprise Linux 7.4
- Red Hat Enterprise Linux 7.5
- Red Hat Enterprise Linux 7.6
- Red Hat Enterprise Linux 7.7
- Red Hat Enterprise Linux 7.8
- Red Hat Enterprise Linux 7.9
- SUSE Linux Enterprise Server 11 Xen x64 SP3
- SUSE Linux Enterprise Server 11 Xen x64 SP4
- SUSE Linux Enterprise Server 11 x64 SP3
- SUSE Linux Enterprise Server 11 x64 SP4
- SUSE Linux Enterprise Server 12
- SUSE Linux Enterprise Server 12 SP1
- SUSE Linux Enterprise Server 12 SP2
- SUSE Linux Enterprise Server 12 SP3
- SUSE Linux Enterprise Server 12 Xen
- SUSE Linux Enterprise Server 12 Xen SP1
- SUSE Linux Enterprise Server 12 Xen SP2
- SUSE Linux Enterprise Server 12 Xen SP3
- VMware ESXi 5.5 U2
- VMware ESXi 5.5 U3
- VMware ESXi 6.0
- VMware ESXi 6.0 U1
- VMware ESXi 6.0 U2
- VMware ESXi 6.0 U3

For a complete list of supported, certified and tested operating systems, plus additional details and links to relevant web sites, see the Operating System Interoperability Guide:

<https://lenovopress.com/osig#servers=x240-7162>

## Physical specifications

The Flex System x240 Compute Node features the following dimensions and weight (approximate):

- Height: 56 mm (2.2 in)
- Depth: 492 mm (19.4 in)
- Width: 217 mm (8.6 in)
- Maximum weight: 7.1 kg (15.6 lb)

The Flex System x240 Compute Node features the following shipping dimensions and weight (approximate):

- Height: 197 mm (7.8 in)
- Depth: 603 mm (23.7 in)
- Width: 430 mm (16.9 in)
- Weight: 8 kg (17.6 lb)

## Supported environment

The Flex System x240 Compute Node complies with ASHRAE Class A3 specifications and is supported in the following operating environment:

- Power on:
  - Temperature: 5 - 40 °C (41 - 104 °F)
  - Humidity, non-condensing: -12 °C dew point (10.4 °F) and 8 - 85% relative humidity
  - Maximum dew point: 24 °C (75 °F)
  - Maximum altitude: 3048 m (10,000 ft)
  - Maximum rate of temperature change: 5 °C/hr (41 °F/hr)
- Power off:
  - Temperature: 5 - 45 °C (41 - 113 °F)
  - Relative humidity: 8 - 85%
  - Maximum dew point: 27 °C (80.6 °F)
- Storage (non-operating):
  - Temperature: 1 - 60 °C (33.8 - 140 °F)
  - Altitude: 3050 m (10,006 ft)
  - Relative humidity: 5 - 80%
  - Maximum dew point: 29 °C (84.2 °F)
- Shipment (non-operating):
  - Temperature: -40 - 60 °C (-40 - 140 °F)
  - Altitude: 10,700 m (35,105 ft)
  - Relative humidity: 5 - 100%
  - Maximum dew point: 29 °C (84.2 °F)

## Warranty options

The system has a three-year warranty with 24x7 standard call center support and 9x5 Next Business Day onsite coverage. Also available are Lenovo Services warranty maintenance upgrades and post-warranty maintenance agreements, with a well-defined scope of services, including service hours, response time, term of service, and service agreement terms and conditions.

Lenovo warranty service upgrade offerings are region-specific. Not all warranty service upgrades are available in every region. For more information about Lenovo warranty service upgrade offerings that are available in your region, go to the Data Center Advisor and Configurator website <http://dcsc.lenovo.com>, then do the following:

1. In the Customize a Model box in the middle of the page, select the **Services** option in the Customization Option dropdown menu
2. Enter in the machine type & model of the system
3. From the search results, you can click either **Deployment Services** or **Support Services** to view the offerings

The following table explains warranty service definitions in more detail.

Table 19. Warranty service definitions

Term	Description
On-site service	A service technician will arrive at the client's location for equipment service.
24x7x2 hour	A service technician is scheduled to arrive at the client's location within two hours after remote problem determination is completed. Lenovo provides service around the clock, every day, including Lenovo holidays.
24x7x4 hour	A service technician is scheduled to arrive at the client's location within four hours after remote problem determination is completed. Lenovo provides service around the clock, every day, including Lenovo holidays.
9x5x4 hour	A service technician is scheduled to arrive at the client's location within four business hours after remote problem determination is completed. Lenovo provides service 8:00 am - 5:00 pm in the client's local time zone, Monday-Friday, excluding Lenovo holidays. For example, if a customer reports an incident at 3:00 pm on Friday, the technician will arrive by 10:00 am the following Monday.
9x5 next business day	A service technician is scheduled to arrive at the client's location on the business day after remote problem determination is completed. Lenovo provides service 8:00 am - 5:00 pm in the client's local time zone, Monday - Friday, excluding Lenovo holidays. Calls received after 4:00 pm local time require an extra business day for service dispatch. Next business day service is not guaranteed.
Committed Repair	Problems receive priority handling so that repairs are completed within the committed time of 6, 8, or 24 hours. Lenovo provides service 24 hours/day, every day, including Lenovo holidays.

The following Lenovo warranty service upgrades are available:

- Warranty and maintenance service upgrades:
  - Three, four, or five years of 9x5 or 24x7 service coverage
  - Onsite response from next business day to 2 or 4 hours
  - Committed repair service
  - Warranty extension of up to 5 years
  - Post warranty extensions

- **Committed Repair Service**  
Committed Repair Services enhances the level of Warranty Service Upgrade or Post Warranty/Maintenance Service offering associated with the selected systems. Offerings vary and are available in select countries.
  - Priority handling to meet defined time frames to restore the failing machine to good working condition
  - Committed repair service levels are measured within the following coverage hours:
    - 24x7x6: Service performed 24 hours per day, 7 days per week, within 6 hours
    - 24x7x8: Service performed 24 hours per day, 7 days per week, within 8 hours
    - 24x7x24: Service performed 24 hours per day, 7 days per week, within 24 hours
- **Hard Disk Drive Retention**  
Lenovo's Hard Disk Drive Retention (HDDR) service is a multi-drive hard drive retention offering that ensures your data is always under your control, regardless of the number of hard drives that are installed in your Lenovo server. In the unlikely event of a hard drive failure, you retain possession of your hard drive while Lenovo replaces the failed drive part. Your data stays safely on your premises, in your hands. The Hard Drive Retention service can be purchased in convenient bundles with our warranty upgrades and extensions.
- **Microcode Support**  
Keeping microcode current helps prevent hardware failures and security exposure. There are two levels of service: analysis of the installed base and analysis and update where required. Offerings vary by region and can be bundled with other warranty upgrades and extensions.
- **Remote Technical Support Services (RTS)**  
RTS provides comprehensive technical call center support for covered servers, storage, operating systems, and applications. Providing a single source for support of hardware and software issues, RTS can reduce problem resolution time, decreasing the cost to address technical problems and increasing uptime. Offerings are available for Windows, Linux, IBM Systems Director, VMware, Microsoft business applications, and Lenovo System x storage devices, and IBM OEM storage devices.



## Regulatory compliance

The server conforms to the following standards:

- ASHRAE Class A3
- FCC - Verified to comply with Part 15 of the FCC Rules Class A
- Canada ICES-004, issue 3 Class A
- UL/IEC 60950-1
- CSA C22.2 No. 60950-1
- NOM-019
- Argentina IEC 60950-1
- Japan VCCI, Class A
- IEC 60950-1 (CB Certificate and CB Test Report)
- China CCC (GB4943); (GB9254, Class A); (GB17625.1)
- Taiwan BSMI CNS13438, Class A; CNS14336
- Australia/New Zealand AS/NZS CISPR 22, Class A
- Korea KN22, Class A, KN24
- Russia/GOST ME01, IEC 60950-1, GOST R 51318.22, GOST R 51318.249, GOST R 51317.3.2, GOST R 51317.3.3
- IEC 60950-1 (CB Certificate and CB Test Report)
- CE Mark (EN55022 Class A, EN60950-1, EN55024, EN61000-3-2, EN61000-3-3)
- CISPR 22, Class A
- TUV-GS (EN60950-1/IEC 60950-1, EK1-ITB2000)

## Lenovo Financial Services

Lenovo Financial Services reinforces Lenovo's commitment to deliver pioneering products and services that are recognized for their quality, excellence, and trustworthiness. Lenovo Financial Services offers financing solutions and services that complement your technology solution anywhere in the world.

We are dedicated to delivering a positive finance experience for customers like you who want to maximize your purchase power by obtaining the technology you need today, protect against technology obsolescence, and preserve your capital for other uses.

We work with businesses, non-profit organizations, governments and educational institutions to finance their entire technology solution. We focus on making it easy to do business with us. Our highly experienced team of finance professionals operates in a work culture that emphasizes the importance of providing outstanding customer service. Our systems, processes and flexible policies support our goal of providing customers with a positive experience.

We finance your entire solution. Unlike others, we allow you to bundle everything you need from hardware and software to service contracts, installation costs, training fees, and sales tax. If you decide weeks or months later to add to your solution, we can consolidate everything into a single invoice.

Our Premier Client services provide large accounts with special handling services to ensure these complex transactions are serviced properly. As a premier client, you have a dedicated finance specialist who manages your account through its life, from first invoice through asset return or purchase. This specialist develops an in-depth understanding of your invoice and payment requirements. For you, this dedication provides a high-quality, easy, and positive financing experience.

For your region-specific offers, please ask your Lenovo sales representative or your technology provider about the use of Lenovo Financial Services. For more information, see the following Lenovo website:

<https://www.lenovo.com/us/en/landingpage/lenovo-financial-services/>

## Related publications and links

For more information, see the following resources:

- Flex System Information Center:  
<http://publib.boulder.ibm.com/infocenter/flexsys/information/index.jsp>
- Flex System x240 Compute Node Installation and Service Guide:  
[http://pic.dhe.ibm.com/infocenter/flexsys/information/topic/com.ibm.acc.8737.doc/printable\\_doc.html](http://pic.dhe.ibm.com/infocenter/flexsys/information/topic/com.ibm.acc.8737.doc/printable_doc.html)
- ServerProven for Flex System:  
<http://www.lenovo.com/us/en/serverproven/flexsystem.shtml>
- Operating System Interoperability Guide:  
<http://lenovopress.com/osig>
- Flex System Interoperability Guide:  
<http://lenovopress.com/fsig>
- xREF - System x Reference Sheets:  
<http://lenovopress.com/xref>
- US Announcement Letter:  
<http://ibm.com/common/ssi/cgi-bin/ssialias?infotype=dd&subtype=ca&&htmlfid=897/ENUS113-198>

## Related product families

Product families related to this document are the following:

- [Blade Servers](#)

## Notices

Lenovo may not offer the products, services, or features discussed in this document in all countries. Consult your local Lenovo representative for information on the products and services currently available in your area. Any reference to a Lenovo product, program, or service is not intended to state or imply that only that Lenovo product, program, or service may be used. Any functionally equivalent product, program, or service that does not infringe any Lenovo intellectual property right may be used instead. However, it is the user's responsibility to evaluate and verify the operation of any other product, program, or service. Lenovo may have patents or pending patent applications covering subject matter described in this document. The furnishing of this document does not give you any license to these patents. You can send license inquiries, in writing, to:

Lenovo (United States), Inc.  
8001 Development Drive  
Morrisville, NC 27560  
U.S.A.  
Attention: Lenovo Director of Licensing

LENOVO PROVIDES THIS PUBLICATION "AS IS" WITHOUT WARRANTY OF ANY KIND, EITHER EXPRESS OR IMPLIED, INCLUDING, BUT NOT LIMITED TO, THE IMPLIED WARRANTIES OF NON-INFRINGEMENT, MERCHANTABILITY OR FITNESS FOR A PARTICULAR PURPOSE. Some jurisdictions do not allow disclaimer of express or implied warranties in certain transactions, therefore, this statement may not apply to you.

This information could include technical inaccuracies or typographical errors. Changes are periodically made to the information herein; these changes will be incorporated in new editions of the publication. Lenovo may make improvements and/or changes in the product(s) and/or the program(s) described in this publication at any time without notice.

The products described in this document are not intended for use in implantation or other life support applications where malfunction may result in injury or death to persons. The information contained in this document does not affect or change Lenovo product specifications or warranties. Nothing in this document shall operate as an express or implied license or indemnity under the intellectual property rights of Lenovo or third parties. All information contained in this document was obtained in specific environments and is presented as an illustration. The result obtained in other operating environments may vary. Lenovo may use or distribute any of the information you supply in any way it believes appropriate without incurring any obligation to you.

Any references in this publication to non-Lenovo Web sites are provided for convenience only and do not in any manner serve as an endorsement of those Web sites. The materials at those Web sites are not part of the materials for this Lenovo product, and use of those Web sites is at your own risk. Any performance data contained herein was determined in a controlled environment. Therefore, the result obtained in other operating environments may vary significantly. Some measurements may have been made on development-level systems and there is no guarantee that these measurements will be the same on generally available systems. Furthermore, some measurements may have been estimated through extrapolation. Actual results may vary. Users of this document should verify the applicable data for their specific environment.

© Copyright Lenovo 2024. All rights reserved.

This document, TIPS1284, was created or updated on February 11, 2018.

Send us your comments in one of the following ways:

- Use the online Contact us review form found at:  
<https://lenovopress.lenovo.com/TIPS1284>
- Send your comments in an e-mail to:  
[comments@lenovopress.com](mailto:comments@lenovopress.com)

This document is available online at <https://lenovopress.lenovo.com/TIPS1284>.

## Trademarks

Lenovo and the Lenovo logo are trademarks or registered trademarks of Lenovo in the United States, other countries, or both. A current list of Lenovo trademarks is available on the Web at <https://www.lenovo.com/us/en/legal/copytrade/>.

The following terms are trademarks of Lenovo in the United States, other countries, or both:

Lenovo®  
Flex System  
Lenovo Services  
ServeRAID  
ServerProven®  
System x®  
ThinkServer®  
ToolsCenter  
XClarity®

The following terms are trademarks of other companies:

Intel® and Xeon® are trademarks of Intel Corporation or its subsidiaries.

Linux® is the trademark of Linus Torvalds in the U.S. and other countries.

Microsoft®, RemoteFX®, Windows Server®, and Windows® are trademarks of Microsoft Corporation in the United States, other countries, or both.

Other company, product, or service names may be trademarks or service marks of others.